

Anti-RPS6 Antibody Picoband®

Catalog Number: A01567-1

About RPS6

Ribosomal protein S6 (rpS6) is a component of the 40S ribosomal subunit and is therefore thought to be involved in regulating translation. Ribosomes, the organelles that catalyze protein synthesis, consist of a small 40S subunit and a large 60S subunit. Together these subunits are composed of 4 RNA species and approximately 80 structurally distinct proteins. This gene encodes a cytoplasmic ribosomal protein that is a component of the 40S subunit. The protein belongs to the S6E family of ribosomal proteins. It is the major substrate of protein kinases in the ribosome, with subsets of five C-terminal serine residues phosphorylated by different protein kinases. Phosphorylation is induced by a wide range of stimuli, including growth factors, tumor-promoting agents, and mitogens. Dephosphorylation occurs at growth arrest. The protein may contribute to the control of cell growth and proliferation through the selective translation of particular classes of mRNA. As is typical for genes encoding ribosomal proteins, there are multiple processed pseudogenes of this gene dispersed through the genome. While the true function of rpS6 is currently under investigation, studies have shown that it is involved in the regulation of cell size, cell proliferation, and glucose homeostasis.

Overview

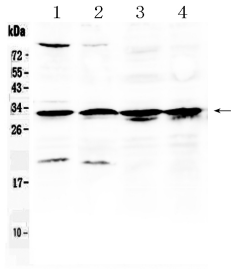
| | |
|----------------------|--|
| Product Name | Anti-RPS6 Antibody Picoband® |
| Reactive Species | Human, Mouse, Rat |
| Description | Boster Bio Anti-RPS6 Antibody Picoband® catalog # A01567-1. Tested in IHC, WB applications. This antibody reacts with Human, Mouse, Rat. The brand Picoband indicates this is a premium antibody that guarantees superior quality, high affinity, and strong signals with minimal background in Western blot applications. Only our best-performing antibodies are designated as Picoband, ensuring unmatched performance. |
| Application | IHC, WB |
| Clonality | Polyclonal |
| Formulation | Each vial contains 4mg Trehalose, 0.9mg NaCl, 0.2mg Na ₂ HPO ₄ , 0.05mg NaN ₃ . |
| Storage Instructions | Store at -20°C for one year from date of receipt. After reconstitution, at 4°C for one month. It can also be aliquotted and stored frozen at -20°C for six months. Avoid repeated freeze-thaw cycles. |
| Host | Rabbit |
| Uniprot ID | P62753 |

Technical Details

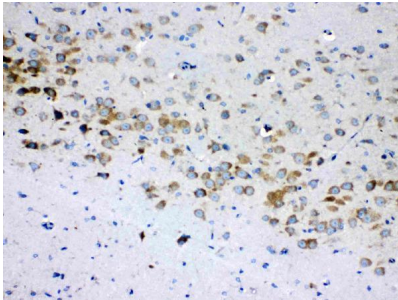
| | |
|-------------------------------|--|
| Immunogen | A synthetic peptide corresponding to a sequence at the N-terminus of human RPS6, identical to the related mouse and rat sequences. |
| Recommended Detection Systems | Boster recommends Enhanced Chemiluminescent Kit with anti-Rabbit IgG (EK1002) for Western blot, and HRP Conjugated anti-Rabbit IgG Super Vision Assay Kit (SV0002-1) for IHC(P). |
| Cross Reactivity | No cross-reactivity with other proteins. |

| | |
|---------------------|---|
| Isotype | Rabbit IgG |
| Form | Lyophilized |
| Concentration | Adding 0.2 ml of distilled water will yield a concentration of 500 ug/ml. |
| Purification | Immunogen affinity purified. |
| Suggested Dilutions | Immunohistochemistry (Paraffin-embedded Section), 0.5-1ug/ml, Human, Rat Western blot, 0.1-0.5ug/ml, Human, Mouse, Rat |

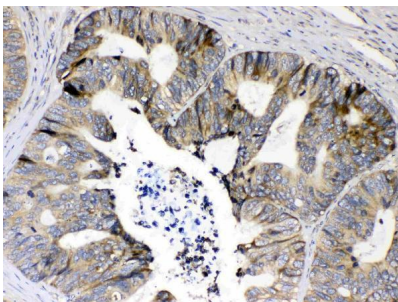
Anti-RPS6 Antibody Picoband® (A01567-1) Images



Western blot analysis of RPS6 using anti-RPS6 antibody (A01567-1). Electrophoresis was performed on a 5-20% SDS-PAGE gel at 70V (Stacking gel) / 90V (Resolving gel) for 2-3 hours. The sample well of each lane was loaded with 50ug of sample under reducing conditions. Lane 1: rat testis tissue lysates, Lane 2: mouse testis tissue lysates, Lane 3: MCF-7 whole Cell lysates, Lane 4: A549 whole cell lysates. After Electrophoresis, proteins were transferred to a Nitrocellulose membrane at 150mA for 50-90 minutes. Blocked the membrane with 5% Non-fat Milk/ TBS for 1.5 hour at RT. The membrane was incubated with rabbit anti-RPS6 antigen affinity purified polyclonal antibody (Catalog # A01567-1) at 0.5 ug/mL overnight at 4°C, then washed with TBS-0.1%Tween 3 times with 5 minutes each and probed with a goat anti-rabbit IgG-HRP secondary antibody at a dilution of 1:10000 for 1.5 hour at RT. The signal is developed using an Enhanced Chemiluminescent detection (ECL) kit (Catalog # EK1002) with Tanon 5200 system. A specific band was detected for RPS6 at approximately 32KD. The expected band size for RPS6 is at 29KD.

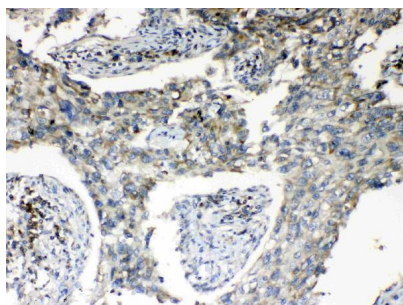


IHC analysis of RPS6 using anti-RPS6 antibody (A01567-1). RPS6 was detected in paraffin-embedded section of rat brain tissues. Heat mediated antigen retrieval was performed in citrate buffer (pH6, epitope retrieval solution) for 20 mins. The tissue section was blocked with 10% goat serum. The tissue section was then incubated with 1ug/ml rabbit anti-RPS6 Antibody (A01567-1) overnight at 4°C. Biotinylated goat anti-rabbit IgG was used as secondary antibody and incubated for 30 minutes at 37°C. The tissue section was developed using Streptavidin-Biotin-Complex (SABC)(Catalog # SA1022) with DAB as the chromogen.

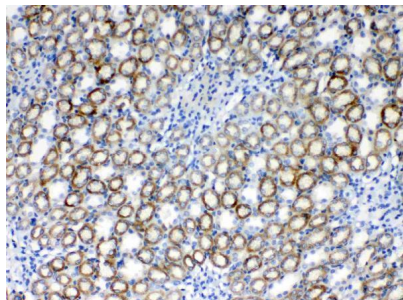


IHC analysis of RPS6 using anti-RPS6 antibody (A01567-1). RPS6 was detected in paraffin-embedded section of human intestinal cancer tissues. Heat mediated antigen retrieval was performed in citrate buffer (pH6, epitope retrieval solution) for 20 mins. The tissue section was blocked with 10% goat serum. The tissue section was then incubated with 1ug/ml rabbit anti-RPS6 Antibody (A01567-1) overnight at 4°C. Biotinylated goat anti-rabbit IgG was used as secondary antibody and incubated for 30 minutes at 37°C. The tissue section was developed using Streptavidin-Biotin-Complex (SABC)(Catalog # SA1022) with DAB as the chromogen.

IHC analysis of RPS6 using anti-RPS6 antibody (A01567-1). RPS6 was detected in paraffin-embedded section of human lung cancer tissues. Heat mediated antigen retrieval was performed in citrate buffer (pH6, epitope retrieval solution) for 20 mins. The tissue section was blocked with 10% goat serum. The tissue section was then incubated with 1ug/ml rabbit anti-RPS6 Antibody (A01567-1) overnight at 4°C.



Biotinylated goat anti-rabbit IgG was used as secondary antibody and incubated for 30 minutes at 37°C. The tissue section was developed using Streptavidin-Biotin-Complex (SABC)(Catalog # SA1022) with DAB as the chromogen.



IHC analysis of RPS6 using anti-RPS6 antibody (A01567-1). RPS6 was detected in paraffin-embedded section of rat kidney tissues. Heat mediated antigen retrieval was performed in citrate buffer (pH6, epitope retrieval solution) for 20 mins. The tissue section was blocked with 10% goat serum. The tissue section was then incubated with 1ug/ml rabbit anti-RPS6 Antibody (A01567-1) overnight at 4°C. Biotinylated goat anti-rabbit IgG was used as secondary antibody and incubated for 30 minutes at 37°C. The tissue section was developed using Streptavidin-Biotin-Complex (SABC)(Catalog # SA1022) with DAB as the chromogen.

Submit a product review to [Biocompare.com](https://www.biocompare.com)

Submit a review of this product to [Biocompare.com](https://www.biocompare.com) to receive a \$20 Amazon.com giftcard! Your reviews help your fellow scientists make the right decisions. Thank you for your contribution.



Anti-RPS6 Antibody

For Research Use Only. Not for use in diagnostic procedures.