

Anti-Phospho-Ribosomal Protein S6 (S235) RPS6 Antibody

Catalog Number: A01567S6S235

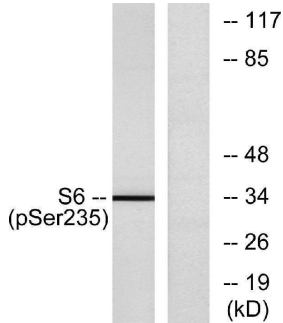
Overview

Product Name	Anti-Phospho-Ribosomal Protein S6 (S235) RPS6 Antibody
Reactive Species	Human, Mouse, Rat
Description	Boster Bio Anti-Phospho-Ribosomal Protein S6 (S235) RPS6 Antibody catalog # A01567S6S235. Tested in WB, ELISA, IHC applications. This antibody reacts with Human, Mouse, Rat.
Application	ELISA, IHC, WB
Clonality	Polyclonal
Formulation	Liquid in PBS containing 50% glycerol, 0.5% stabilizing protein and 0.02% sodium azide. *This antibody is supplied in a stabilized formulation. Compatibility with conjugation reactions depends on the chemistry of the conjugation method used. For conjugation methods that are not compatible with the stabilizing components present in this formulation, a carrier-free antibody format is required.
Storage Instructions	Store at -20°C for one year. For short term storage and frequent use, store at 4°C for up to one month. Avoid repeated freeze-thaw cycles.
Host	Rabbit
Uniprot ID	P62753

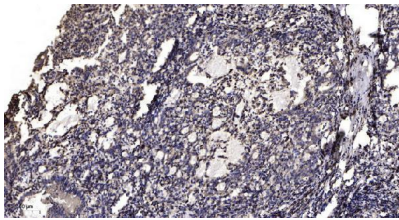
Technical Details

Immunogen	The antiserum was produced against synthesized peptide derived from human S6 Ribosomal Protein around the phosphorylation site of Ser235. AA range:200-249
Cross Reactivity	No cross reactivity with other proteins.
Isotype	IgG
Form	Liquid
Concentration	1 mg/ml
Purification	The antibody was affinity-purified from rabbit antiserum by affinity-chromatography using epitope-specific immunogen.
Suggested Dilutions	WB 1:500-2000 IHC 1:50-300 ELISA 1:2000-20000

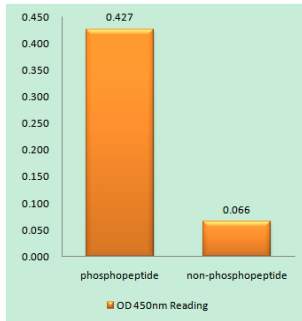
Anti-Phospho-Ribosomal Protein S6 (S235) RPS6 Antibody (A01567S6S235) Images



Western blot analysis of lysates from 293 cells treated with serum 10% 15', using S6 Ribosomal Protein (Phospho-Ser235) Antibody. The lane on the right is blocked with the phospho peptide.



Immunohistochemical analysis of paraffin-embedded human Gastric adenocarcinoma. 1, Antibody was diluted at 1:200 (4° overnight). 2, Tris-EDTA, pH9.0 was used for antigen retrieval. 3, Secondary antibody was diluted at 1:200 (room temperature, 45min).



Enzyme-Linked Immunosorbent Assay (Phospho-ELISA) for Immunogen Phosphopeptide (Phospho-left) and Non-Phosphopeptide (Phospho-right), using S6 Ribosomal Protein (Phospho-Ser235) Antibody

Submit a product review to Biocompare.com

Submit a review of this product to Biocompare.com to receive a \$20 Amazon.com giftcard! Your reviews help your fellow scientists make the right decisions. Thank you for your contribution.



Anti-Phospho-Ribosomal Protein S6 (S235) RPS6 Antibody
For Research Use Only. Not for use in diagnostic procedures.