

Anti-LAMP-2 Antibody

Catalog Number: A01573

About LAMP2

Autophagy, the process of bulk degradation of cellular proteins through an autophagosomic-lysosomal pathway is important for normal growth control and may be defective in tumor cells. It is involved in the preservation of cellular nutrients under starvation conditions as well as the normal turnover of cytosolic components and is negatively regulated by TOR (Target of rapamycin). LAMP-2, a highly glycosylated protein associated with the lysosome, has recently been shown to be important in autophagy as mice deficient in this protein failed to convert autophagic vacuoles into vacuoles leading to impaired degradation of long-lived proteins. This correlates with the finding that human LAMP-2 deficiency causing Danon's disease is associated with the accumulation of autophagic material in striated myocytes. LAMP-2 exists in multiple isoforms.

Overview

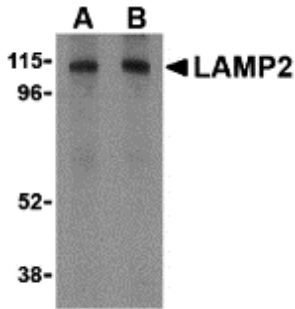
Product Name	Anti-LAMP-2 Antibody
Reactive Species	Human, Mouse
Description	Boster Bio Anti-LAMP-2 Antibody (Catalog # A01573). Tested in ELISA, WB, ICC, IHC-P applications. This antibody reacts with Human, Mouse.
Application	ELISA, IHC-P, ICC, WB
Clonality	Polyclonal
Formulation	LAMP-2 Antibody is supplied in PBS containing 0.02% sodium azide.
Storage Instructions	LAMP-2 antibody can be stored at 4°C for three months and -20°C, stable for up to one year. Avoid repeated freeze-thaw cycles. Antibodies should not be exposed to prolonged high temperatures.
Host	Rabbit
Uniprot ID	P17047

Technical Details

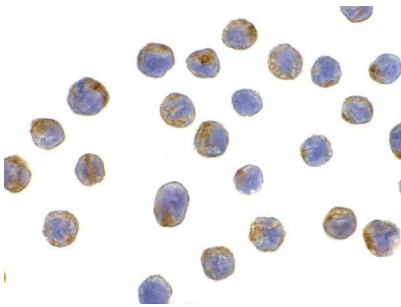
Immunogen	LAMP-2 antibody was raised against a 17 amino acid synthetic peptide from near the carboxy terminus of human LAMP-2. The immunogen is located within the last 50 amino acids of LAMP-2.
Predicted Reactive Species	Bovine, Chicken, Rat
Cross Reactivity	LAMP-2 antibody cross reacts with LAMP2B and LAMP2C, but not LAMP2A.
Isotype	IgG
Form	Liquid
Concentration	1 mg/mL

Purification	LAMP-2 Antibody is affinity chromatography purified via peptide column.
Suggested Dilutions	LAMP-2 antibody can be used for the detection of LAMP-2 by Western blot at 1 - 2 ug/mL. Antibody can also be used for immunocytochemistry starting at 10 ug/mL and immunohistochemistry starting at 5 ug/mL. Antibody validated: Western Blot in human samples; Immunohistochemistry in mouse samples and Immunocytochemistry in human samples. All other applications and species not yet tested. Optimal dilutions for each application should be determined by the researcher.

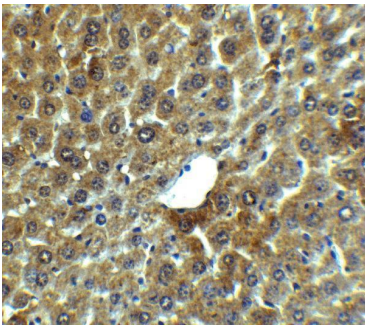
Anti-LAMP-2 Antibody (A01573) Images



Western blot analysis of LAMP-2 in HepG2 cell lysate with LAMP-2 antibody at (A) 1 and (B) 2 ug/mL.



Immunocytochemistry of LAMP-2 in HepG2 cells with LAMP-2 antibody at 10 ug/mL.



Immunohistochemistry of LAMP-2 in mouse liver tissue with LAMP-2 Antibody at 5 ug/mL.

Submit a product review to [Biocompare.com](https://www.biocompare.com)

Submit a review of this product to [Biocompare.com](https://www.biocompare.com) to receive a \$20 Amazon.com giftcard! Your reviews help your fellow scientists make the right decisions. Thank you for your contribution.



Anti-LAMP-2 Antibody

For Research Use Only. Not for use in diagnostic procedures.