

## Anti-Adducin Alpha / Beta (phospho-S726/713) ADD1 Antibody

Catalog Number: A01575S726

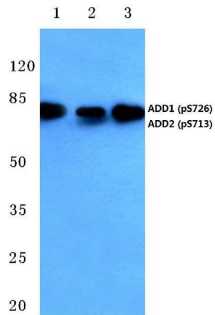
### Overview

Product Name	Anti-Adducin Alpha / Beta (phospho-S726/713) ADD1 Antibody
Reactive Species	Human, Mouse, Rat
Description	Boster Bio Anti-Adducin Alpha / Beta (phospho-S726/713) ADD1 Antibody catalog # A01575S726. Tested in WB,IHC applications. This antibody reacts with Human,Mouse,Rat.
Application	IHC, WB
Clonality	Polyclonal
Formulation	Rabbit IgG, 1mg/ml in PBS with 0.02% sodium azide, 50% glycerol, pH7.2
Storage Instructions	Store at -20°C for one year. For short term storage and frequent use, store at 4°C for up to one month. Avoid repeated freeze-thaw cycles.
Host	Rabbit
Uniprot ID	P35611/P35612

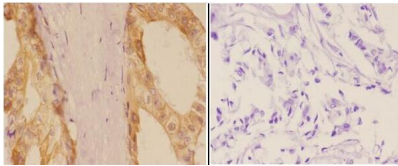
### Technical Details

Immunogen	Synthetic phosphopeptide derived from human Adducin alpha around the phosphorylation site of Serine 726.
Cross Reactivity	No cross reactivity with other proteins.
Isotype	IgG
Form	Liquid
Concentration	1 mg/ml
Purification	The antibody was affinity-purified from rabbit antiserum by affinity-chromatography using epitope-specific immunogen and the purity is > 95% (by SDS-PAGE).
Suggested Dilutions	WB: 1:500-1:1000 IHC: 1:50-1:200

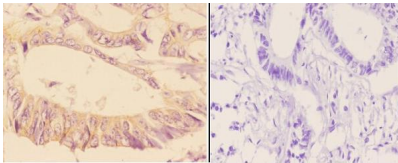
## Anti-Adducin Alpha / Beta (phospho-S726/713) ADD1 Antibody (A01575S726) Images



Western blot (WB) analysis of p-Adducin alpha/beta (S726/713) polyclonal antibody at 1:500 dilution Lane1:HeLa cell lysate treated with PMA Lane2:SP2/0 cell lysate treated with PMA Lane3:PC12 cell lysate treated with PMA



Immunohistochemistry (IHC) analyzes of Adducin alpha/beta (phospho-S726/713) pAb in paraffin-embedded human breast carcinoma tissue at 1:50, showing cytoplasm and membrane staining. Negative control (the right) Using PBS instead of primary antibody, secondary antibody is Goat Anti-Rabbit IgG-biotin followed by avidin-peroxidase.



Immunohistochemistry (IHC) analyzes of Adducin alpha/beta (phospho-S726/713) pAb in paraffin-embedded human rectum carcinoma tissue at 1:50, showing cytoplasm and membrane staining. Negative control (the right) Using PBS instead of primary antibody, secondary antibody is Goat Anti-Rabbit IgG-biotin followed by avidin-peroxidase.

### Submit a product review to [Biocompare.com](https://www.biocompare.com)

Submit a review of this product to [Biocompare.com](https://www.biocompare.com) to receive a \$20 Amazon.com giftcard! Your reviews help your fellow scientists make the right decisions. Thank you for your contribution.



Anti-Adducin Alpha / Beta (phospho-S726/713) ADD1 Antibody

For Research Use Only. Not for use in diagnostic procedures.