

Anti-Protein phosphatase 1D PPM1D Antibody

Catalog Number: A01576

About PPM1D

Wild-type p53 induced phosphatase 1 (WIP1) / protein phosphatase magnesium-dependent 1 delta (PPM1D), a protein identified in the p53 DNA response pathway, is a member of the PP2C family of serine/threonine protein phosphatases which selectively inactivates p38 MAPK and dephosphorylates the ATM/ATR targets, Chk1 and p53 (1,2). Studies have shown that it is overexpressed in human cancers and is involved in the regulation of multiple DNA damage signaling pathways (2,3). PPM1D deletion results in a reduction of T and B cell function and compromised cell division, rendering cells resistant to becoming cancerous and slowing tumor development (4,5).

Overview

Product Name	Anti-Protein phosphatase 1D PPM1D Antibody
Reactive Species	Human, Mouse, Rat
Description	Boster Bio Anti-Protein phosphatase 1D PPM1D Antibody (Catalog # A01576). Tested in ELISA, WB, IHC-P, IF applications. This antibody reacts with Human, Mouse, Rat.
Application	ELISA, IF, IHC-P, WB
Clonality	Polyclonal
Formulation	PPM1D antibody is supplied in PBS containing 0.02% sodium azide.
Storage Instructions	PPM1D antibody can be stored at 4°C for three months and -20°C, stable for up to one year.
Host	Rabbit
Uniprot ID	Q8IVR6

Technical Details

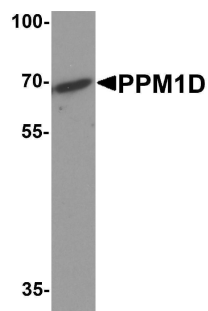
Immunogen	PPM1D antibody was raised against an 18 amino acid peptide near the carboxy terminus of human PPM1D. The immunogen is located within the last 50 amino acids of PPM1D.
Predicted Reactive Species	Bovine, Chicken, Rat
Cross Reactivity	PPM1D antibody is human, mouse and rat reactive. At least two isoforms of PPM1D are known to exist; this antibody will only detect the larger isoform.
Isotype	IgG
Form	Liquid
Concentration	1 mg/mL
Purification	PPM1D antibody is affinity chromatography purified via peptide column.

Suggested Dilutions

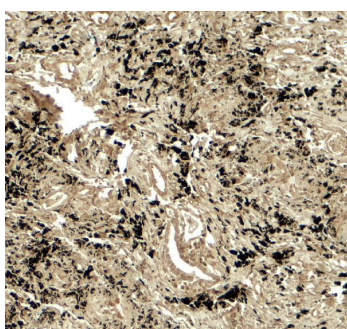
PPM1D antibody can be used for detection of PPM1D by Western blot at 1 - 2 ug/ml. Antibody can also be used for immunohistochemistry starting at 5 ug/mL. For immunofluorescence start at 20 ug/mL.

Antibody validated: Western Blot in mouse samples; Immunohistochemistry in human samples and Immunofluorescence in human samples. All other applications and species not yet tested. Optimal dilutions for each application should be determined by the researcher.

Anti-Protein phosphatase 1D PPM1D Antibody (A01576) Images



Western blot analysis of PPM1D in 3T3 cell lysate with PPM1D antibody at 1 ug/ml.



Immunohistochemistry of PPM1D in human lung carcinoma tissue with PPM1D antibody at 5 ug/ml.



Immunofluorescence of PPM1D in human lung carcinoma tissue with PPM1D antibody at 20 ug/ml.

Submit a product review to [Biocompare.com](https://www.biocompare.com)

Submit a review of this product to [Biocompare.com](https://www.biocompare.com) to receive a \$20 Amazon.com giftcard! Your reviews help your fellow scientists make the right decisions. Thank you for your contribution.



Anti-Protein phosphatase 1D PPM1D Antibody

For Research Use Only. Not for use in diagnostic procedures.