

## Anti-Cullin 4a/CUL4A Antibody Picoband®

Catalog Number: A01579-1

### About CUL4A

Cullin-4A is a protein that in humans is encoded by the CUL4A gene. It belongs to the cullin family of ubiquitin ligase proteins and is highly homologous to the CUL4B protein. CUL4A regulates numerous key processes such as DNA repair, chromatin remodeling, spermatogenesis, haematopoiesis and the mitotic cell cycle. As a result, CUL4A has been implicated in several cancers and the pathogenesis of certain viruses including HIV. Interestingly, a component of a CUL4A complex, Cereblon, was discovered to be a major target of the teratogenic agent thalidomide.

### Overview

Product Name	Anti-Cullin 4a/CUL4A Antibody Picoband®
Reactive Species	Human, Mouse, Rat
Description	Boster Bio Anti-Cullin 4a/CUL4A Antibody Picoband® catalog # A01579-1. Tested in ELISA, WB applications. This antibody reacts with Human, Mouse, Rat. The brand Picoband indicates this is a premium antibody that guarantees superior quality, high affinity, and strong signals with minimal background in Western blot applications. Only our best-performing antibodies are designated as Picoband, ensuring unmatched performance.
Application	ELISA, WB
Clonality	Polyclonal
Formulation	Each vial contains 4mg Trehalose, 0.9mg NaCl, 0.2mg Na <sub>2</sub> HPO <sub>4</sub> , 0.05mg NaN <sub>3</sub> .
Storage Instructions	Store at -20°C for one year from date of receipt. After reconstitution, at 4°C for one month. It can also be aliquotted and stored frozen at -20°C for six months. Avoid repeated freeze-thaw cycles.
Host	Rabbit
Uniprot ID	Q13619

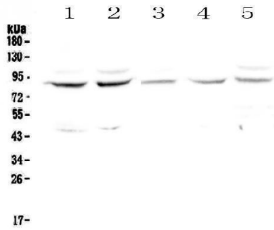
### Technical Details

Immunogen	E. coli-derived human Cullin 4a recombinant protein (Position: M494-A759).
Recommended Detection Systems	Boster recommends Enhanced Chemiluminescent Kit with anti-Rabbit IgG (EK1002) for Western blot.
Cross Reactivity	No cross-reactivity with other proteins.
Isotype	Rabbit IgG
Form	Lyophilized
Concentration	Adding 0.2 ml of distilled water will yield a concentration of 500 ug/ml.

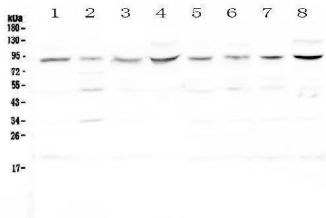
Suggested Dilutions

Western blot, 0.1-0.5ug/ml  
ELISA, 0.1-0.5ug/ml

## Anti-Cullin 4a/CUL4A Antibody Picoband® (A01579-1) Images



Western blot analysis of Cullin 4a using anti-Cullin 4a antibody (A01579-1). Electrophoresis was performed on a 5-20% SDS-PAGE gel at 70V (Stacking gel) / 90V (Resolving gel) for 2-3 hours. The sample well of each lane was loaded with 50ug of sample under reducing conditions. Lane 1: human Hela whole cell lysates, Lane 2: human COLO-320 whole cell lysates, Lane 3: human MDA-MB-231 whole cell lysates, Lane 4: human Jurkat whole cell lysates, Lane 5: human PANC-1 whole cell lysates. After Electrophoresis, proteins were transferred to a Nitrocellulose membrane at 150mA for 50-90 minutes. Blocked the membrane with 5% Non-fat Milk/ TBS for 1.5 hour at RT. The membrane was incubated with rabbit anti-Cullin 4a antigen affinity purified polyclonal antibody (Catalog # A01579-1) at 0.5 ug/mL overnight at 4°C, then washed with TBS-0.1%Tween 3 times with 5 minutes each and probed with a goat anti-rabbit IgG-HRP secondary antibody at a dilution of 1:10000 for 1.5 hour at RT. The signal is developed using an Enhanced Chemiluminescent detection (ECL) kit (Catalog # EK1002) with Tanon 5200 system. A specific band was detected for Cullin 4a at approximately 88KD. The expected band size for Cullin 4a is at 88KD.



Western blot analysis of Cullin 4a using anti-Cullin 4a antibody (A01579-1). Electrophoresis was performed on a 5-20% SDS-PAGE gel at 70V (Stacking gel) / 90V (Resolving gel) for 2-3 hours. The sample well of each lane was loaded with 50ug of sample under reducing conditions. Lane 1: rat brain tissue lysates, Lane 2: rat spleen tissue lysates, Lane 3: rat heart tissue lysates, Lane 4: rat testis tissue lysates, Lane 5: mouse brain tissue lysates, Lane 6: mouse spleen tissue lysates, Lane 7: mouse heart tissue lysates, Lane 8: mouse testis tissue lysates. After Electrophoresis, proteins were transferred to a Nitrocellulose membrane at 150mA for 50-90 minutes. Blocked the membrane with 5% Non-fat Milk/ TBS for 1.5 hour at RT. The membrane was incubated with rabbit anti-Cullin 4a antigen affinity purified polyclonal antibody (Catalog # A01579-1) at 0.5 ug/mL overnight at 4°C, then washed with TBS-0.1%Tween 3 times with 5 minutes each and probed with a goat anti-rabbit IgG-HRP secondary antibody at a dilution of 1:10000 for 1.5 hour at RT. The signal is developed using an Enhanced Chemiluminescent detection (ECL) kit (Catalog # EK1002) with Tanon 5200 system. A specific band was detected for Cullin 4a at approximately 88KD. The expected band size for Cullin 4a is at 88KD.

Submit a product review to [Biocompare.com](https://www.biocompare.com)

Submit a review of this product to [Biocompare.com](https://www.biocompare.com) to receive a \$20 Amazon.com giftcard! Your reviews help your fellow scientists make the right decisions. Thank you for your contribution.



Anti-Cullin 4a/CUL4A Antibody

For Research Use Only. Not for use in diagnostic procedures.