

## Anti-BMPR1A Antibody (C-term)

Catalog Number: A01581

### About BMPR1A

The bone morphogenetic protein (BMP) receptors are a family of transmembrane serine/threonine kinases that include the type I receptors BMPR1A and BMPR1B and the type II receptor BMPR2. These receptors are also closely related to the activin receptors, ACVR1 and ACVR2. The ligands of these receptors are members of the TGF-beta superfamily. TGF-betas and activins transduce their signals through the formation of heteromeric complexes with 2 different types of serine (threonine) kinase receptors: type I receptors of about 50-55 kD and type II receptors of about 70-80 kD. Type II receptors bind ligands in the absence of type I receptors, but they require their respective type I receptors for signaling, whereas type I receptors require their respective type II receptors for ligand binding.

### Overview

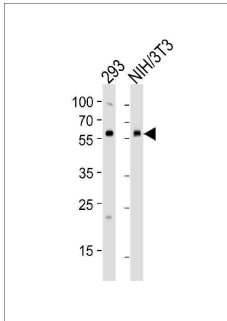
Product Name	Anti-BMPR1A Antibody (C-term)
Reactive Species	Human, Mouse
Description	Boster Bio Anti-BMPR1A Antibody (C-term) (Catalog # A01581). Tested in WB, IHC-P application(s). This antibody reacts with Human, Mouse.
Application	IHC-P, WB
Clonality	Polyclonal
Formulation	Purified polyclonal antibody supplied in PBS with 0.09% (W/V) sodium azide.
Storage Instructions	Maintain refrigerated at 2-8°C for up to 2 weeks. For long-term storage, store at -20°C in small aliquots to prevent freeze-thaw cycles.
Host	Rabbit
Uniprot ID	P36894

### Technical Details

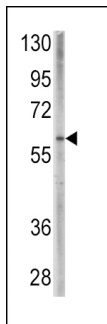
Immunogen	This BMPR1A antibody is generated from rabbits immunized with a KLH conjugated synthetic peptide between 166-196 amino acids from the C-terminal region of human BMPR1A.
Predicted Reactive Species	Mouse, Rat
Isotype	Rabbit IgG
Purification	This antibody is prepared by Saturated Ammonium Sulfate (SAS) precipitation followed by dialysis against PBS.
Suggested Dilutions	WB: 1:1000 IHC-P: 1:50-1:100



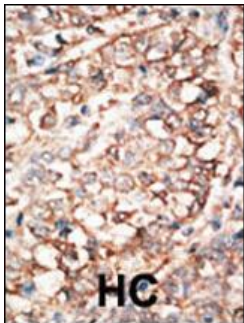
## Anti-BMPR1A Antibody (C-term) (A01581) Images



Western blot analysis of lysates from 293, mouse NIH/3T3 cell line (from left to right), using BMPR1A Antibody (C180). A01581 was diluted at 1:1000 at each lane. A goat anti-rabbit IgG H&L (HRP) at 1:5000 dilution was used as the secondary antibody. Lysates at 35ug per lane.



Western blot analysis of anti-BMPR1A Pab (Cat. #A01581) in CEM cell line lysates (35ug/lane). BMPR1A (arrow) was detected using the purified Pab.



Formalin-fixed and paraffin-embedded human cancer tissue reacted with the primary antibody, which was peroxidase-conjugated to the secondary antibody, followed by AEC staining. This data demonstrates the use of this antibody for immunohistochemistry; clinical relevance has not been evaluated. BC = breast carcinoma; HC = hepatocarcinoma.

### Submit a product review to [Biocompare.com](https://www.biocompare.com)

Submit a review of this product to [Biocompare.com](https://www.biocompare.com) to receive a \$20 Amazon.com giftcard! Your reviews help your fellow scientists make the right decisions. Thank you for your contribution.



Anti-BMPR1A Antibody (C-term)

For Research Use Only. Not for use in diagnostic procedures.