

Anti-GDF15 Antibody Picoband®

Catalog Number: A01583-1

About GDF15

Growth/differentiation factor 15 (GDF15) is a protein belonging to the transforming growth factor beta superfamily that has a role in regulating inflammatory and apoptotic pathways in injured tissues and during disease processes. GDF15 is also known as TGF-PL, MIC-1, PDF, PLAB, and PTGFB. GDF15 mRNA is most abundant in the liver, with lower levels seen in some other tissues. Its expression in liver can be significantly up-regulated in during injury of organs such as liver, kidney, heart and lung.

Overview

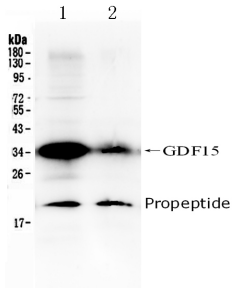
Product Name	Anti-GDF15 Antibody Picoband®
Reactive Species	Human
Description	Boster Bio Anti-GDF15 Antibody Picoband® catalog # A01583-1. Tested in ELISA, WB applications. This antibody reacts with Human. The brand Picoband indicates this is a premium antibody that guarantees superior quality, high affinity, and strong signals with minimal background in Western blot applications. Only our best-performing antibodies are designated as Picoband, ensuring unmatched performance.
Application	WB, ELISA (Cap)
Clonality	Polyclonal
Formulation	Each vial contains antibody formulated with stabilizing components, 0.9 mg NaCl, 0.2 mg Na ₂ HPO ₄ , and 0.05 mg NaN ₃ . *This antibody is supplied in a stabilized formulation. Compatibility with conjugation reactions depends on the chemistry of the conjugation method used. For conjugation methods that are not compatible with the stabilizing components present in this formulation, a carrier-free antibody format is required.
Storage Instructions	Store at -20°C for one year from date of receipt. After reconstitution, at 4°C for one month. It can also be aliquotted and stored frozen at -20°C for six months. Avoid repeated freeze-thaw cycles.
Host	Rabbit
Uniprot ID	Q99988

Technical Details

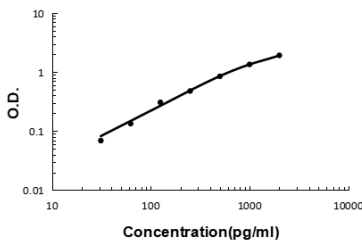
Immunogen	E.coli-derived human GDF15 recombinant protein (Position: A195-I308). Human GDF15 shares 68.1% and 69.2% amino acid (aa) sequence identity with mouse and rat GDF15, respectively.
Recommended Detection Systems	Boster recommends Enhanced Chemiluminescent Kit with anti-Rabbit IgG (EK1002) for Western blot.
Cross Reactivity	No cross-reactivity with other proteins.

Isotype	Rabbit IgG
Form	Lyophilized
Concentration	Adding 0.2 ml of distilled water will yield a concentration of 500 ug/ml.
Purification	Immunogen affinity purified.
Suggested Dilutions	Western blot, 0.1-0.5ug/ml, Human ELISA(Cap), 1-5 ug/ml, Human

Anti-GDF15 Antibody Picoband® (A01583-1) Images



Western blot analysis of GDF15 using anti-GDF15 antibody (A01583-1). Electrophoresis was performed on a 5-20% SDS-PAGE gel at 70V (Stacking gel) / 90V (Resolving gel) for 2-3 hours. The sample well of each lane was loaded with 50ug of sample under reducing conditions. Lane 1: 22RV whole Cell lysates, Lane 2: human placenta tissue lysates. After Electrophoresis, proteins were transferred to a Nitrocellulose membrane at 150mA for 50-90 minutes. Blocked the membrane with 5% Non-fat Milk/ TBS for 1.5 hour at RT. The membrane was incubated with rabbit anti-GDF15 antigen affinity purified polyclonal antibody (Catalog # A01583-1) at 0.5 ug/mL overnight at 4°C, then washed with TBS-0.1%Tween 3 times with 5 minutes each and probed with a goat anti-rabbit IgG-HRP secondary antibody at a dilution of 1:10000 for 1.5 hour at RT. The signal is developed using an Enhanced Chemiluminescent detection (ECL) kit (Catalog # EK1002) with Tanon 5200 system. A specific band was detected for GDF15 at approximately 34KD. The expected band size for GDF15 is at 34KD.



Sandwich ELISA - Recombinant human GDF-15 protein standard curve. Use in combination with reagents from Human GDF-15 ELISA Kit EZ-Set (DIY Antibody Pairs) (EZ0767).

Submit a product review to Biocompare.com

Submit a review of this product to Biocompare.com to receive a \$20 Amazon.com giftcard! Your reviews help your fellow scientists make the right decisions. Thank you for your contribution.



Anti-GDF15 Antibody

For Research Use Only. Not for use in diagnostic procedures.