

Anti-GDF15 Antibody

Catalog Number: A01583-4

About GDF15

Growth/differentiation factor 15 (GDF15) is a protein belonging to the transforming growth factor beta superfamily that has a role in regulating inflammatory and apoptotic pathways in injured tissues and during disease processes. GDF15 is also known as TGF-PL, MIC-1, PDF, PLAB, and PTGFB. GDF15 mRNA is most abundant in the liver, with lower levels seen in some other tissues. Its expression in liver can be significantly up-regulated in during injury of organs such as liver, kidney, heart and lung.

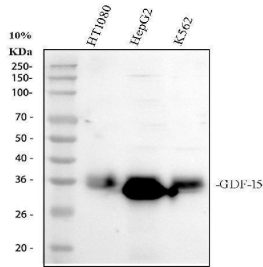
Overview

Product Name	Anti-GDF15 Antibody
Reactive Species	Human, Mouse
Description	Boster Bio Anti-GDF15 Antibody catalog # A01583-4. Tested in WB, IHC, ELISA applications. This antibody reacts with Human, Mouse.
Application	ELISA, IHC, WB
Clonality	Polyclonal
Formulation	500 ug/ml antibody with PBS, 0.02% NaN ₃ , 1 mg stabilizing protein and 50% glycerol *This antibody is supplied in a stabilized formulation. Compatibility with conjugation reactions depends on the chemistry of the conjugation method used. For conjugation methods that are not compatible with the stabilizing components present in this formulation, a carrier-free antibody format is required.
Storage Instructions	12 months from date of receipt at -20°C as supplied. 6 months 2 to 8°C after reconstitution. Avoid repeated freezing and thawing.
Host	Rabbit
Uniprot ID	Q99988

Technical Details

Immunogen	E.coli-derived human GDF15 recombinant protein (Position: A33-I308).
Form	Liquid
Concentration	500 ug/ml
Purification	Immunogen affinity purified.
Suggested Dilutions	Western blot, 1:500-2000 Immunohistochemistry, 1:50-400 ELISA, 1:100-1000

Anti-GDF15 Antibody (A01583-4) Images



Western blot analysis of GDF15 using anti-GDF15 antibody (A01583-4). Electrophoresis was performed on a 10% SDS-PAGE gel at 80V (Stacking gel) / 120V (Resolving gel) for 2 hours. The sample well of each lane was loaded with 30 ug of sample under reducing conditions. Lane 1: human HT1080 whole cell lysates, Lane 2: human HepG2 whole cell lysates, Lane 3: human K562 whole cell lysates. After electrophoresis, proteins were transferred to a nitrocellulose membrane at 150 mA for 50-90 minutes. Blocked the membrane with 5% non-fat milk/TBS for 1.5 hour at RT. The membrane was incubated with rabbit anti-GDF15 antigen affinity purified polyclonal antibody (A01583-4) at 1:1000 overnight at 4°C, then washed with TBS-0.1%Tween 3 times with 5 minutes each and probed with a goat anti-rabbit IgG-HRP secondary antibody at a dilution of 1:1000 for 1.5 hour at RT. The signal is developed using an ECL Plus Western Blotting Substrate (Catalog # AR1196-200) with Tanon 5200 system. A specific band was detected for GDF15 at approximately 34 kDa. The expected band size for GDF15 is at 34 kDa.

Submit a product review to Biocompare.com

Submit a review of this product to Biocompare.com to receive a \$20 Amazon.com giftcard! Your reviews help your fellow scientists make the right decisions. Thank you for your contribution.



Anti-GDF15 Antibody

For Research Use Only. Not for use in diagnostic procedures.