

Anti-MALT1 Antibody

Catalog Number: A01599

About MALT1

MALT1 was initially identified as a novel gene that was recurrently rearranged in t(11;18)(q21;q21) mucosa-associated lymphoid tissue lymphomas along with the apoptosis inhibitor protein c-IAP2 (1). MALT1, along with the proteins CARMA1 and Bcl10 form an NF-kappaB-activating complex, termed the CBM signalosome, that acts downstream of lymphocyte antigen receptors as well as many other non-lymphoid cell-surface receptors that play a role in multiple cellular functions (2,3). MALT1 has proteolytic activity, and this activity is critical for full NF-kappaB response in T cell activation (4).

Overview

Product Name	Anti-MALT1 Antibody
Reactive Species	Human, Mouse, Rat
Description	Boster Bio Anti-MALT1 Antibody (Catalog # A01599). Tested in ELISA, WB, IHC-P, IF applications. This antibody reacts with Human, Mouse, Rat.
Application	ELISA, IF, IHC-P, WB
Clonality	Polyclonal
Formulation	MALT1 antibody is supplied in PBS containing 0.02% sodium azide.
Storage Instructions	MALT1 antibody can be stored at 4°C for three months and -20°C, stable for up to one year.
Host	Rabbit
Uniprot ID	Q9UDY8

Technical Details

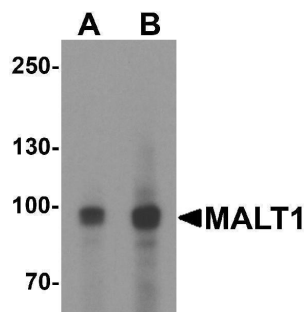
Immunogen	MALT1 antibody was raised against an 18 amino acid peptide near the carboxy terminus of human MALT1. The immunogen is located within amino acids 630 - 680 of MALT1.
Predicted Reactive Species	Bovine, Mouse
Cross Reactivity	MALT1 antibody is human, mouse and rat reactive. At least two isoforms of MALT1 are known to exist; this antibody will detect both isoforms.
Isotype	IgG
Form	Liquid
Concentration	1 mg/mL
Purification	MALT1 antibody is affinity chromatography purified via peptide column.

Suggested Dilutions

MALT1 antibody can be used for detection of MALT1 by Western blot at 1 - 2 ug/mL. Antibody can also be used for immunohistochemistry starting at 5 ug/mL. For immunofluorescence start at 20 ug/mL.

Antibody validated: Western Blot in mouse samples; Immunohistochemistry in human samples and Immunofluorescence in human samples. All other applications and species not yet tested. Optimal dilutions for each application should be determined by the researcher.

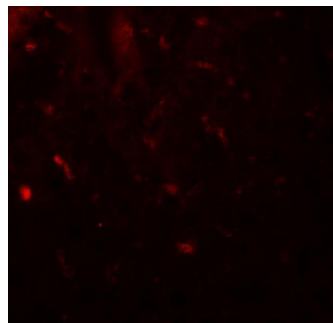
Anti-MALT1 Antibody (A01599) Images



Western blot analysis of MALT1 in EL4 cell lysate with MALT1 antibody at (A) 1 and (2) ug/ml.



Immunohistochemistry of MALT1 in human spleen tissue with MALT1 antibody at 5 ug/mL.



Immunofluorescence of MALT1 in human spleen tissue with MALT1 antibody at 20 ug/mL.

Submit a product review to [Biocompare.com](https://www.biocompare.com)

Submit a review of this product to [Biocompare.com](https://www.biocompare.com) to receive a \$20 Amazon.com giftcard! Your reviews help your fellow scientists make the right decisions. Thank you for your contribution.



Anti-MALT1 Antibody

For Research Use Only. Not for use in diagnostic procedures.