

Anti-ATF1 Antibody

Catalog Number: A01600-1

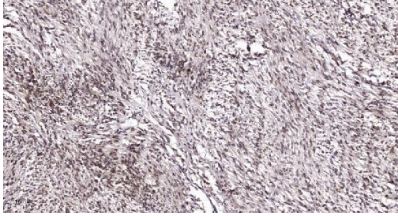
Overview

Product Name	Anti-ATF1 Antibody
Reactive Species	Human, Mouse, Rat
Description	Boster Bio Anti-ATF1 Antibody (Catalog# A01600-1). Tested in WB, IHC, ICC, IF, ELISA applications. This antibody reacts with Human, Mouse, Rat.
Application	ELISA, IF, IHC, ICC, WB
Clonality	Polyclonal
Formulation	PBS containing 50% glycerol, 0.5% stabilizing protein and 0.02% sodium azide. *This antibody is supplied in a stabilized formulation. Compatibility with conjugation reactions depends on the chemistry of the conjugation method used. For conjugation methods that are not compatible with the stabilizing components present in this formulation, a carrier-free antibody format is required.
Storage Instructions	Store at -20°C for one year. For short-term storage and frequent use, store at 4°C for up to one month. Avoid repeated freeze-thaw cycles.
Host	Rabbit
Uniprot ID	P18846

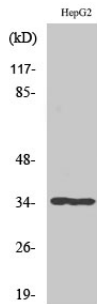
Technical Details

Immunogen	A peptide derived from human ATF1. Immunogen sequence location: 176-225
Cross Reactivity	No cross reactivity with other proteins.
Isotype	Rabbit IgG
Form	Liquid
Concentration	0.5-1mg/ml, actual concentration vary by lot. Use suggested dilution ratio to decide dilution procedure.
Purification	The antibody was purified from rabbit antiserum by affinity-chromatography using immunogen.
Suggested Dilutions	WB 1:500 - 1:2000. IHC 1:100 - 1:300. ICC/IF 1:200 - 1:1000. ELISA: 1:10000. Not yet tested in other applications.

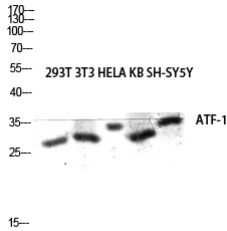
Anti-ATF1 Antibody (A01600-1) Images



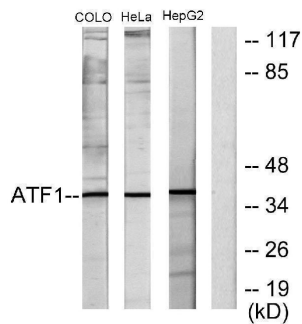
Immunohistochemical analysis of paraffin-embedded human Colon cancer. 1, Antibody was diluted at 1:200(4° overnight). 2, Tris-EDTA,pH9.0 was used for antigen retrieval. 3,Secondary antibody was diluted at 1:200(room temperature, 45min).



Western Blot analysis of various cells using ATF-1 Polyclonal Antibody diluted at 1:500.



Western blot analysis of 293T 3T3 HELA KB SH-SY5Y lysis using ATF-1 antibody. Antibody was diluted at 1:500.



Western blot analysis of lysates from HepG2, COLO205, and HeLa cells, using ATF1 Antibody. The lane on the right is blocked with the synthesized peptide.

Submit a product review to [Biocompare.com](https://www.biocompare.com)

Submit a review of this product to [Biocompare.com](https://www.biocompare.com) to receive a \$20 Amazon.com giftcard! Your reviews help your fellow scientists make the right decisions. Thank you for your contribution.



Anti-ATF1 Antibody

For Research Use Only. Not for use in diagnostic procedures.