

Anti-ATF1 (T209) Antibody

Catalog Number: A01600T209

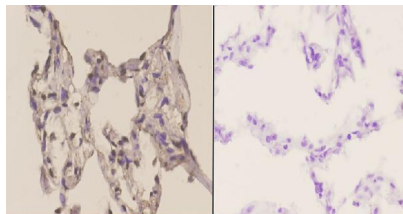
Overview

Product Name	Anti-ATF1 (T209) Antibody
Reactive Species	Human, Mouse, Rat
Description	Boster Bio Anti-ATF1 (T209) Antibody catalog # A01600T209. Tested in IHC,IF applications. This antibody reacts with Human,Mouse,Rat.
Application	IF, IHC
Clonality	Polyclonal
Formulation	Rabbit IgG, 1mg/ml in PBS with 0.02% sodium azide, 50% glycerol, pH7.2
Storage Instructions	Store at -20°C for one year. For short term storage and frequent use, store at 4°C for up to one month. Avoid repeated freeze-thaw cycles.
Host	Rabbit
Uniprot ID	P18846

Technical Details

Immunogen	Synthetic peptide, corresponding to amino acids 170-220 of Human ATF1.
Cross Reactivity	No cross reactivity with other proteins.
Isotype	IgG
Form	Liquid
Concentration	1 mg/ml
Purification	The antibody was affinity-purified from rabbit antiserum by affinity-chromatography using epitope-specific immunogen and the purity is > 95% (by SDS-PAGE).
Suggested Dilutions	IHC: 1:50-1:200 IF: 1:50-1:200

Anti-ATF1 (T209) Antibody (A01600T209) Images



Immunohistochemistry (IHC) analyzes of ATF1 (T209) pAb in paraffin-embedded human lung carcinoma tissue at 1:50, showing nucleus staining. Negative control (the right) Using PBS instead of primary antibody, secondary antibody is Goat Anti-Rabbit IgG-biotin followed by avidin-peroxidase.

Submit a product review to Biocompare.com

Submit a review of this product to Biocompare.com to receive a \$20 Amazon.com giftcard! Your reviews help your fellow scientists make the right decisions. Thank you for your contribution.



Anti-ATF1 (T209) Antibody

For Research Use Only. Not for use in diagnostic procedures.