

Anti-Homeobox protein Meis1 MEIS1 Antibody

Catalog Number: A01602-1

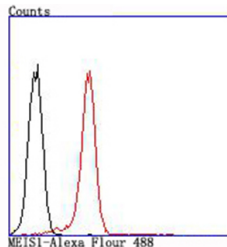
Overview

| | |
|----------------------|---|
| Product Name | Anti-Homeobox protein Meis1 MEIS1 Antibody |
| Reactive Species | Human, Mouse, Rat |
| Description | Boster Bio Anti-Homeobox protein Meis1 MEIS1 Antibody catalog # A01602-1. Tested in WB,IP,Flow Cytometry applications. This antibody reacts with Human,Mouse,Rat. |
| Application | Flow Cytometry, IP, WB |
| Clonality | Polyclonal |
| Formulation | Rabbit IgG, 1mg/ml in PBS with 0.02% sodium azide, 50% glycerol, pH7.2 |
| Storage Instructions | Store at -20°C for one year. For short term storage and frequent use, store at 4°C for up to one month. Avoid repeated freeze-thaw cycles. |
| Host | Rabbit |
| Uniprot ID | O00470 |

Technical Details

| | |
|---------------------|--|
| Immunogen | Recombinant protein |
| Cross Reactivity | No cross reactivity with other proteins. |
| Isotype | IgG |
| Form | Liquid |
| Concentration | 1 mg/ml |
| Purification | ProA affinity purified |
| Suggested Dilutions | WB: 1:500 FC: 1:50-1:100 |

Anti-Homeobox protein Meis1 MEIS1 Antibody (A01602-1) Images



Flow cytometric analysis of K562 cells with MEIS1 antibody at 1/100 dilution (red) compared with an unlabelled control (cells without incubation with primary antibody; black).

Submit a product review to Biocompare.com

Submit a review of this product to Biocompare.com to receive a \$20 Amazon.com giftcard! Your reviews help your fellow scientists make the right decisions. Thank you for your contribution.



Anti-Homeobox protein Meis1 MEIS1 Antibody

For Research Use Only. Not for use in diagnostic procedures.