

Anti-Neutrophil Elastase ELANE Antibody

Catalog Number: A01607-1

About ELANE

Transcriptional activator binding to the E-box 1 core sequence of the E-cadherin promoter gene; the core-binding sequence is 5'CAGGTG-3'. Capable of reversing CTBP1-mediated transcription repression. Auxiliary component of the splicing-dependent multiprotein exon junction complex (EJC) deposited at splice junction on mRNAs. The EJC is a dynamic structure consisting of core proteins and several peripheral nuclear and cytoplasmic associated factors that join the complex only transiently either during EJC assembly or during subsequent mRNA metabolism. Participates in the regulation of alternative pre-mRNA splicing. Associates to spliced mRNA within 60 nt upstream of the 5'-splice sites. Component of the PSAP complex which binds RNA in a sequence-independent manner and is proposed to be recruited to the EJC prior to or during the splicing process and to regulate specific excision of introns in specific transcription subsets. Involved in the establishment and maintenance of epithelia cell-cell adhesion. Potential tumor suppressor for renal cell carcinoma.

Ouyang P., J. Cell Biol. 135:1027-1042(1996).

Degen W.G.J., Biochim. Biophys. Acta 1444-384-394(1999).

Shi Y., Oncogene 19:289-297(2000).

Overview

Product Name	Anti-Neutrophil Elastase ELANE Antibody
Reactive Species	Human
Description	Boster Bio Anti-Neutrophil Elastase ELANE Antibody catalog # A01607-1. Tested in WB,ICC/IF,IHC,Flow Cytometry applications. This antibody reacts with Human.
Application	Flow Cytometry, IF, IHC, ICC, WB
Clonality	Polyclonal
Formulation	Rabbit IgG, 1mg/ml in PBS with 0.02% sodium azide, 50% glycerol, pH7.2
Storage Instructions	Store at -20°C for one year. For short term storage and frequent use, store at 4°C for up to one month. Avoid repeated freeze-thaw cycles.
Host	Rabbit
Uniprot ID	P08246

Technical Details

Immunogen	Synthesized peptide derived from human MIP-3beta
Predicted Reactive Species	Boar, Bovine, Canine, Golden Hamster
Cross Reactivity	No cross reactivity with other proteins.

Isotype	IgG
Form	Liquid
Concentration	1 mg/ml
Purification	ProA affinity purified
Suggested Dilutions	<p>Dilute the sample so that the expected range of concentrations fall within the detection range of this kit.</p> <p>If the expected range of concentration is unknown, a pilot test should be conducted to decide the optimal dilution ratio for your samples.</p> <p>Some PubMed article(s) citing the expression level of this target are as follows:</p> <p>Boster Bio's internal QC testing used:</p> <p>WB: 1:1,000 ICC: 1:50 IHC: 1:50-1:200 FC: 1:10-1:50</p>

Anti-Neutrophil Elastase ELANE Antibody (A01607-1) Images

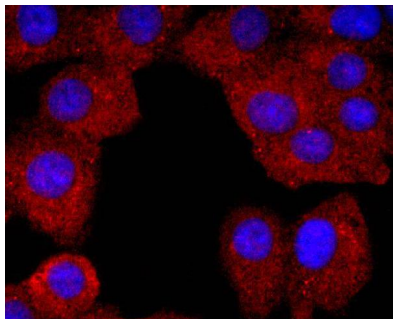


Figure 1. Immunocytochemistry staining of ELANE using Anti-Neutrophil Elastase ELANE Antibody (A01607-1).

ICC staining Neutrophil Elastase in A549 cells (red). The nuclear counter stain is DAPI (blue). Cells were fixed in paraformaldehyde

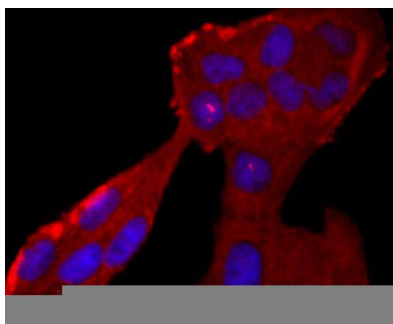


Figure 2. Immunocytochemistry staining of ELANE using Anti-Neutrophil Elastase ELANE Antibody (A01607-1).

ICC staining Neutrophil Elastase in Hela cells (red). The nuclear counter stain is DAPI (blue). Cells were fixed in paraformaldehyde

Submit a product review to Biocompare.com

Submit a review of this product to Biocompare.com to receive a \$20 Amazon.com giftcard! Your reviews help your fellow scientists make the right decisions. Thank you for your contribution.



Anti-Neutrophil Elastase ELANE Antibody