

Anti-Arylsulfatase B ARSB Antibody

Catalog Number: A01609

About ARSB

Aryl sulfatase B (ARSB) forms a homodimer that hydrolyzes sulfate groups of N-Acetyl-D-galactosamine, chondroitin sulfate, and dermatan sulfate (1). ARSB localizes to the lysosome as well as to the extracellular matrix (2). Mucopolysaccharidosis type VI is an autosomal recessive lysosomal storage disorder resulting from a deficiency of arylsulfatase B (3), and can be treated with exogenous ARSB (4).

Overview

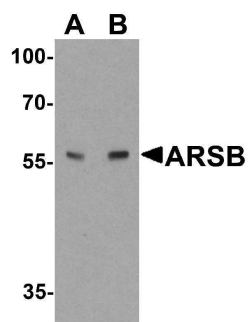
Product Name	Anti-Arylsulfatase B ARSB Antibody
Reactive Species	Human, Mouse, Rat
Description	Boster Bio Anti-Arylsulfatase B ARSB Antibody (Catalog # A01609). Tested in ELISA, WB, IHC-P, IF applications. This antibody reacts with Human, Mouse, Rat.
Application	ELISA, IF, IHC-P, WB
Clonality	Polyclonal
Formulation	ARSB Antibody is supplied in PBS containing 0.02% sodium azide.
Storage Instructions	ARSB antibody can be stored at 4°C for three months and -20°C, stable for up to one year.
Host	Rabbit
Uniprot ID	P15848

Technical Details

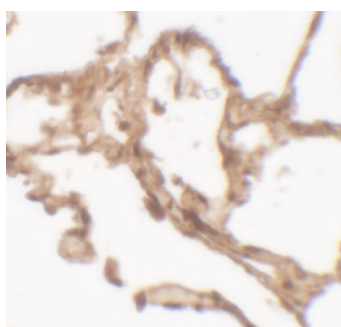
Immunogen	ARSB antibody was raised against a 16 amino acid peptide near the carboxy terminus of human ARSB. The immunogen is located within amino acids 460 - 510 of ARSB.
Predicted Reactive Species	Bovine, Mouse
Cross Reactivity	ARSB antibody is human, mouse and rat reactive. At least two isoforms of ARSB are known to exist; this antibody only recognizes the longest isoform.
Isotype	IgG
Form	Liquid
Concentration	1 mg/mL
Purification	ARSB Antibody is affinity chromatography purified via peptide column.
Suggested Dilutions	ARSB antibody can be used for detection of ARSB by Western blot at 1 - 2 ug/ml. Antibody validated: Western Blot in mouse samples; Immunohistochemistry in human samples and

Immunofluorescence in human samples. All other applications and species not yet tested. Optimal dilutions for each application should be determined by the researcher.

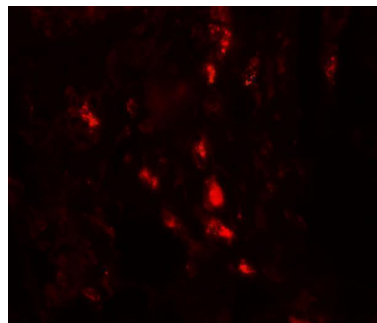
Anti-Arylsulfatase B ARSB Antibody (A01609) Images



Western blot analysis of ARSB in mouse lung tissue lysate with ARSB antibody at (A) 1 and (B) 2 ug/ml.



Immunohistochemistry of ARSB in human lung tissue with ARSB antibody at 2.5 ug/mL.



Immunofluorescence of ARSB in human lung tissue with ARSB antibody at 20 ug/mL.

Submit a product review to [Biocompare.com](https://www.biocompare.com)

Submit a review of this product to [Biocompare.com](https://www.biocompare.com) to receive a \$20 Amazon.com giftcard! Your reviews help your fellow scientists make the right decisions. Thank you for your contribution.



Anti-Arylsulfatase B ARSB Antibody

For Research Use Only. Not for use in diagnostic procedures.