

Anti-Slug SNAI2 Antibody

Catalog Number: A01615

About SNAI2

Slug, a member of the Snail family of C2H2-type zinc finger transcription factors, was initially identified to be involved in epithelial-mesenchymal transitions as well as the formation of the neural tube during vertebrate embryogenesis. Like Snail, Slug transcription can be induced by growth factors such as FGF, BMP, and TGF-beta. Once expressed, Slug will bind E-box regions of promoters and repress transcription of genes such as E-cadherin and Claudin-1. More recently, its expression in breast, esophageal, and colorectal carcinomas has been correlated with poor prognosis for survival. Furthermore, Slug can protect hemapoietic progenitor cells from radiation-induced apoptosis by repressing the p53-mediated transcription of Puma, a BH3-only antagonist of the anti-apoptotic members of the Bcl-2 family. Slug antibody has no cross-reactivity to Snail protein.

Overview

Product Name	Anti-Slug SNAI2 Antibody
Reactive Species	Human, Mouse
Description	Boster Bio Anti-Slug SNAI2 Antibody (Catalog # A01615). Tested in ELISA, WB applications. This antibody reacts with Human, Mouse.
Application	ELISA, WB
Clonality	Polyclonal
Formulation	Slug Antibody is supplied in PBS containing 0.02% sodium azide.
Storage Instructions	Slug antibody can be stored at 4°C for three months and -20°C, stable for up to one year. Avoid repeated freeze-thaw cycles. Antibodies should not be exposed to prolonged high temperatures.
Host	Rabbit
Uniprot ID	O43623

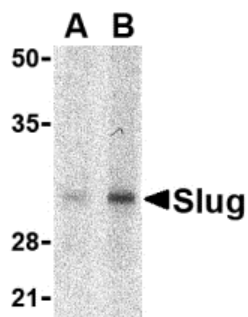
Technical Details

Immunogen	Slug antibody was raised against a 14 amino acid synthetic peptide from near the center of human Slug. The immunogen is located within amino acids 70 - 120 of Slug.
Predicted Reactive Species	Bovine, Rat
Isotype	IgG
Form	Liquid
Concentration	1 mg/mL
Purification	Slug Antibody is affinity chromatography purified via peptide column.

Suggested Dilutions

Slug antibody can be used for detection of Slug by Western blot at 1 to 2 ug/mL.
Antibody validated: Western Blot in human samples. All other applications and species not yet tested. Optimal dilutions for each application should be determined by the researcher.

Anti-Slug SNAI2 Antibody (A01615) Images



Western blot analysis of Slug in human kidney cell lysate with Slug antibody at in (A) 1 and (B) 2 ug/mL.

Submit a product review to Biocompare.com

Submit a review of this product to Biocompare.com to receive a \$20 Amazon.com giftcard! Your reviews help your fellow scientists make the right decisions. Thank you for your contribution.



Anti-Slug SNAI2 Antibody

For Research Use Only. Not for use in diagnostic procedures.