

Anti-Bcl-10 Antibody

Catalog Number: A01616

About BCL10

Apoptosis is related to many diseases including cancer. Cell death signals are transduced by death domain (DD) and caspase recruitment domain (CARD) containing molecules and a caspase family of proteases. CARD containing cell death regulators include ARC, RAIDD, Apaf-1, caspase-9, and caspase-2. A novel CARD containing protein was recently identified by several groups and designated Bcl10, CIPER, mE10, CARMEN, CLAP. Bcl10 is a cellular homolog of the equine herpesvirus-2 E-10 gene. Overexpression of Bcl10 induces JNK, p38, and NF-kappaB activation. Bcl10 interacts with caspase-9 and enhances pro-caspase-9 processing and induces apoptosis through caspase-9 activation. Bcl10 exhibits a variety of mutations in MALT lymphomas and in B and T cell lineage lymphomas indicating that it may be commonly involved in the pathogenesis of human malignancy. Bcl10 is expressed in many human and murine tissues and cell lines.

Overview

Product Name	Anti-Bcl-10 Antibody
Reactive Species	Human, Mouse, Rat
Description	Boster Bio Anti-Bcl-10 Antibody (Catalog # A01616). Tested in ELISA, WB, ICC, IF applications. This antibody reacts with Human, Mouse, Rat.
Application	ELISA, IF, ICC, WB
Clonality	Polyclonal
Formulation	Bcl-10 Antibody is supplied in PBS containing 0.02% sodium azide.
Storage Instructions	Bcl-10 antibody can be stored at 4°C for three months and -20°C, stable for up to one year. Avoid repeated freeze-thaw cycles. Antibodies should not be exposed to prolonged high temperatures.
Host	Rabbit
Uniprot ID	O95999

Technical Details

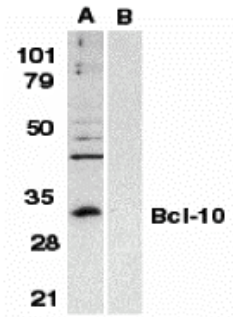
Immunogen	Bcl10 antibody was raised against a peptide corresponding to amino acids near the amino terminus of human Bcl10. The immunogen is located within the first 50 amino acids of Bcl-10.
Predicted Reactive Species	Bovine, Rat
Isotype	IgG
Form	Liquid
Concentration	1 mg/ml
Purification	Bcl-10 Antibody is affinity chromatography purified via peptide column.

Suggested Dilutions

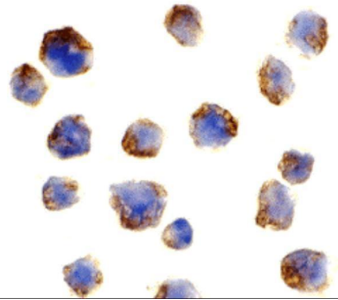
Bcl-10 antibody can be used for detection of BCL10 by Western blot at 0.5 ug/mL dilution. An approximately 31 kDa band can be detected. Antibody can also be used for immunocytochemistry starting at 1 ug/mL. For immunofluorescence start at 10 ug/mL.

Antibody validated: Western Blot in human samples; Immunocytochemistry in human samples and Immunofluorescence in human samples. All other applications and species not yet tested. Optimal dilutions for each application should be determined by the researcher.

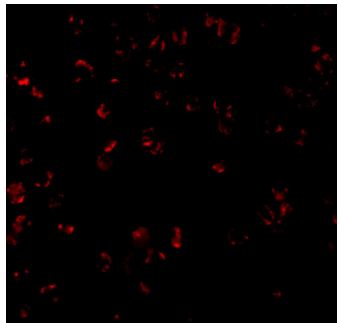
Anti-Bcl-10 Antibody (A01616) Images



Western blot analysis of Bcl-10 in Raji whole cell lysate in the absence (A) or presence (B) of peptide (A01616P) with Bcl-10 antibody at 1:500 dilution.



Immunocytochemistry of Bcl10 in Raji cells with Bcl10 antibody at 1 ug/mL.



Immunofluorescence of Bcl-10 in Raji cells with Bcl-10 antibody at 10 ug/mL.

Submit a product review to [Biocompare.com](https://www.biocompare.com)

Submit a review of this product to [Biocompare.com](https://www.biocompare.com) to receive a \$20 Amazon.com giftcard! Your reviews help your fellow scientists make the right decisions. Thank you for your contribution.



Anti-Bcl-10 Antibody

For Research Use Only. Not for use in diagnostic procedures.