

Anti-B-cell lymphoma/leukemia 10 Bcl10 Antibody

Catalog Number: A01616-1

About BCL10

Mediates apoptosis and actin stress fiber dissolution By similarity.

Yamada E., Biochim. Biophys. Acta 1495:250-262(2000).

Eichmueller S., Proc. Natl. Acad. Sci. U.S.A. 98:629-634(2001).

Nagase T., DNA Res. 3:321-329(1996).

Overview

Product Name	Anti-B-cell lymphoma/leukemia 10 Bcl10 Antibody
Reactive Species	Human
Description	Boster Bio Anti-B-cell lymphoma/leukemia 10 Bcl10 Antibody catalog # A01616-1. Tested in WB,ICC/IF,IHC,IP applications. This antibody reacts with Human.
Application	IP, IF, IHC, ICC, WB
Clonality	Polyclonal
Formulation	Rabbit IgG, 1mg/ml in PBS with 0.02% sodium azide, 50% glycerol, pH7.2
Storage Instructions	Store at -20°C for one year. For short term storage and frequent use, store at 4°C for up to one month. Avoid repeated freeze-thaw cycles.
Host	Rabbit
Uniprot ID	O95999

Technical Details

Immunogen	Synthesized peptide derived from C-terminal of human SLK.
Predicted Reactive Species	Boar, Bovine, Canine, Golden Hamster
Cross Reactivity	No cross reactivity with other proteins.
Isotype	IgG
Form	Liquid
Concentration	1 mg/ml
Purification	ProA affinity purified
Suggested Dilutions	Dilute the sample so that the expected range of concentrations fall within the detection range of this

kit.

If the expected range of concentration is unknown, a pilot test should be conducted to decide the optimal dilution ratio for your samples.

Some PubMed article(s) citing the expression level of this target are as follows:

Boster Bio's internal QC testing used:

WB: 1:1,000

ICC: 1:50-1:200

IHC: 1:50-1:200

Anti-B-cell lymphoma/leukemia 10 Bcl10 Antibody (A01616-1) Images

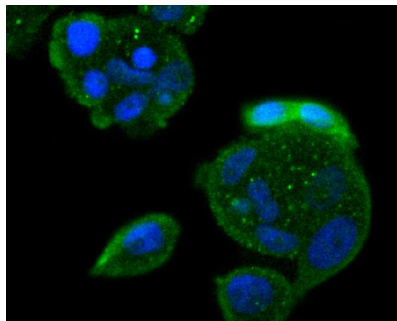


Figure 1. Immunocytochemistry staining of BCL10 using Anti-B-cell lymphoma/leukemia 10 Bcl10 Antibody (A01616-1).

ICC staining Bcl10 in MCF-7 cells (green). The nuclear counter stain is DAPI (blue). Cells were fixed in paraformaldehyde

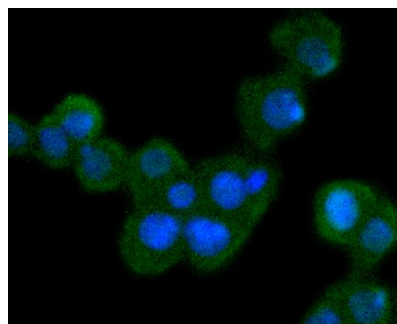


Figure 2. Immunocytochemistry staining of BCL10 using Anti-B-cell lymphoma/leukemia 10 Bcl10 Antibody (A01616-1).

ICC staining Bcl10 in SW480 cells (green). The nuclear counter stain is DAPI (blue). Cells were fixed in paraformaldehyde

Submit a product review to Biocompare.com

Submit a review of this product to Biocompare.com to receive a \$20 Amazon.com giftcard! Your reviews help your fellow scientists make the right decisions. Thank you for your contribution.



Anti-B-cell lymphoma/leukemia 10 Bcl10 Antibody