

## Anti-TPH1 (V256) Antibody

Catalog Number: A01626-2

### Overview

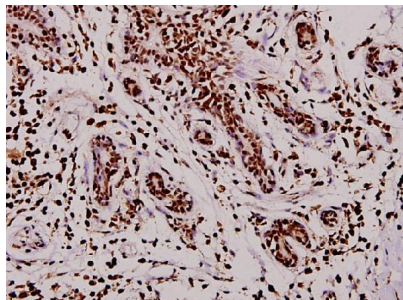
|                      |  |
|----------------------|--|
| Product Name         | Anti-TPH1 (V256) Antibody  |
| Reactive Species     | Human, Mouse, Rat  |
| Description          | Boster Bio Anti-TPH1 (V256) Antibody catalog # A01626-2. Tested in WB,IHC,IF applications. This antibody reacts with Human,Mouse,Rat.      |
| Application          | IF, IHC, WB  |
| Clonality            | Polyclonal   |
| Formulation          | Rabbit IgG, 1mg/ml in PBS with 0.02% sodium azide, 50% glycerol, pH7.2   |
| Storage Instructions | Store at -20°C for one year. For short term storage and frequent use, store at 4°C for up to one month. Avoid repeated freeze-thaw cycles. |
| Host                 | Rabbit   |
| Uniprot ID           | P17752   |

### Technical Details

|                     |   |
|---------------------|---|
| Immunogen           | Synthetic peptide, corresponding to amino acids 220-270 of Human TPH1.  |
| Cross Reactivity    | No cross reactivity with other proteins.  |
| Isotype             | IgG   |
| Form                | Liquid  |
| Concentration       | 1 mg/ml   |
| Purification        | The antibody was affinity-purified from rabbit antiserum by affinity-chromatography using epitope-specific immunogen and the purity is > 95% (by SDS-PAGE). |
| Suggested Dilutions | WB: 1:500-1:1000<br>IHC: 1:50-1:200<br>IF: 1:50-1:200   |

## Anti-TPH1 (V256) Antibody (A01626-2) Images

---



Immunohistochemistry (IHC) analyzes of TPH1 (V256) pAb in paraffin-embedded human breast carcinoma tissue at 1:100.

### Submit a product review to Biocompare.com

---

Submit a review of this product to Biocompare.com to receive a \$20 Amazon.com giftcard! Your reviews help your fellow scientists make the right decisions. Thank you for your contribution.



Anti-TPH1 (V256) Antibody

For Research Use Only. Not for use in diagnostic procedures.