

Anti-IL-16 Antibody

Catalog Number: A01635-1

About IL16

IL-16 was initially identified as a chemotactic cytokine, but is now known to possess a wide range of activities. Later studies have more fully characterized IL-16 as an immunomodulatory cytokine that contributes to the regulatory process of CD4+ T cell recruitment and activation at sites of inflammation in association with asthma and several autoimmune diseases. The precursor of IL-16 (pro-IL-16) is thought to be cleaved towards the C-terminal region by Caspase-3, releasing a 20 kDa active form that binds to and signals through CD4. Besides acting as a chemotactic cytokine, IL-16 is thought to also be involved in the regulation of T cell proliferation and multiple infectious, immune-mediated, and autoimmune inflammatory disorders including irritable bowel syndrome, systemic lupus erythematosus, and neurodegenerative disorders. At least two isoforms of IL-16 are known to exist; the longer isoform (also known as NIL-16) is detected only in neurons of the cerebellum and hippocampus.

Overview

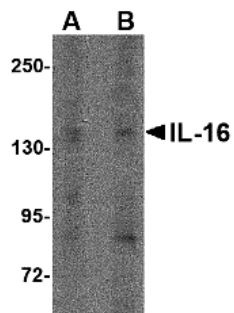
Product Name	Anti-IL-16 Antibody
Reactive Species	Human, Mouse, Rat
Description	Boster Bio Anti-IL-16 Antibody (Catalog # A01635-1). Tested in ELISA, WB, IHC-P, IF applications. This antibody reacts with Human, Mouse, Rat.
Application	ELISA, IF, IHC-P, WB
Clonality	Polyclonal
Formulation	IL-16 Antibody is supplied in PBS containing 0.02% sodium azide.
Storage Instructions	IL-16 antibody can be stored at 4°C for three months and -20°C, stable for up to one year. Avoid repeated freeze-thaw cycles. Antibodies should not be exposed to prolonged high temperatures.
Host	Rabbit
Uniprot ID	Q14005

Technical Details

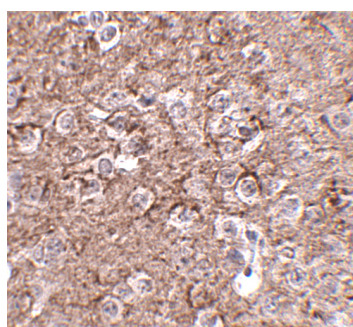
Immunogen	IL-16 antibody was raised against a 20 amino acid synthetic peptide near the amino terminus of human IL-16. The immunogen is located within the first 50 amino acids of IL-16.
Predicted Reactive Species	Bovine, Rat
Cross Reactivity	This antibody will only detect the NIL-16 isoform.
Isotype	IgG
Form	Liquid
Concentration	1 mg/mL

Purification	IL-16 Antibody is affinity chromatography purified via peptide column.
Suggested Dilutions	IL-16 antibody can be used for detection of IL-16 by Western blot at 1 - 2 ug/mL. Antibody can also be used for immunohistochemistry starting at 2.5 ug/mL. For immunofluorescence start at 20 ug/mL. Antibody validated: Western Blot in rat samples; Immunohistochemistry in mouse samples and Immunofluorescence in mouse samples. All other applications and species not yet tested. Optimal dilutions for each application should be determined by the researcher.

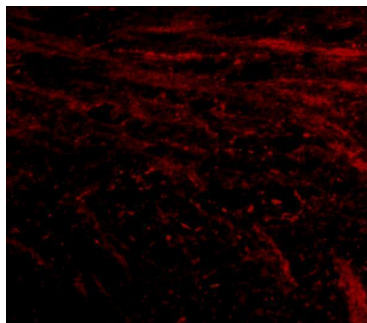
Anti-IL-16 Antibody (A01635-1) Images



Western blot analysis of IL-16 in rat brain tissue lysate with IL-16 antibody at (A) 1 ug/ml and (B) 2 ug/mL.



Immunohistochemistry of IL-16 in mouse brain tissue with IL-16 antibody at 2.5 ug/mL.



Immunofluorescence of IL-16 in mouse brain tissue with IL-16 antibody at 20 ug/mL.

Submit a product review to [Biocompare.com](https://www.biocompare.com)

Submit a review of this product to [Biocompare.com](https://www.biocompare.com) to receive a \$20 Amazon.com giftcard! Your reviews help your fellow scientists make the right decisions. Thank you for your contribution.



Anti-IL-16 Antibody

For Research Use Only. Not for use in diagnostic procedures.