

## Anti-LAT (phospho-Y191) Antibody

Catalog Number: A01654Y191

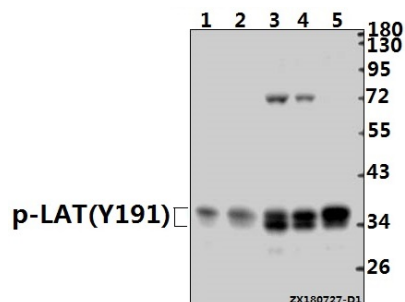
### Overview

Product Name	Anti-LAT (phospho-Y191) Antibody
Reactive Species	Human, Mouse, Rat
Description	Boster Bio Anti-LAT (phospho-Y191) Antibody catalog # A01654Y191. Tested in WB applications. This antibody reacts with Human, Mouse, Rat.
Application	WB
Clonality	Polyclonal
Formulation	Rabbit IgG, 1mg/ml in PBS with 0.02% sodium azide, 50% glycerol, pH7.2
Storage Instructions	Store at -20°C for one year. For short term storage and frequent use, store at 4°C for up to one month. Avoid repeated freeze-thaw cycles.
Host	Rabbit
Uniprot ID	O43561

### Technical Details

Immunogen	Synthetic phosphopeptide derived from human LAT (Isoform Short) around the phosphorylation site of Tyrosine 191.
Cross Reactivity	No cross reactivity with other proteins.
Isotype	IgG
Form	Liquid
Concentration	1 mg/ml
Purification	The antibody was affinity-purified from rabbit antiserum by affinity-chromatography using epitope-specific immunogen and the purity is > 95% (by SDS-PAGE).
Suggested Dilutions	WB: 1:500-1:1000

## Anti-LAT (phospho-Y191) Antibody (A01654Y191) Images



Western blot (WB) analysis of p-LAT (Y191) pAb at 1:1000 dilution Lane1:H9C2 whole cell lysate(40ug) Lane2:RAW264.7 whole cell lysate(40ug) Lane3:K562 whole cell lysate(20ug) Lane4:Myla2059 whole cell lysate(20ug) Lane5:HuT78 whole cell lysate(20ug)

### Submit a product review to Biocompare.com

Submit a review of this product to Biocompare.com to receive a \$20 Amazon.com giftcard! Your reviews help your fellow scientists make the right decisions. Thank you for your contribution.



Anti-LAT (phospho-Y191) Antibody

For Research Use Only. Not for use in diagnostic procedures.