

Anti-GRB10 Antibody

Catalog Number: A01663

About GRB10

GRB10 belongs to a small family of adapter proteins that are known to interact with a number of receptor tyrosine kinases and signaling molecules and function in diverse cellular processes. GRB10 is a growth factor receptor-binding protein that interacts with insulin receptors and insulin-like growth-factor receptors. Overexpression of some isoforms of GRB10 inhibits tyrosine kinase activity and results in growth suppression. GRB10 can also interact with the L isoform of the proapoptotic protein Bim. This gene is imprinted in a highly isoform- and tissue-specific manner, with expression observed from the paternal allele in the brain, and from the maternal allele in the placental trophoblasts.

Overview

Product Name	Anti-GRB10 Antibody
Reactive Species	Human, Mouse, Rat
Description	Boster Bio Anti-GRB10 Antibody (Catalog # A01663). Tested in ELISA, WB, IF applications. This antibody reacts with Human, Mouse, Rat.
Application	ELISA, IF, WB
Clonality	Polyclonal
Formulation	GRB10 Antibody is supplied in PBS containing 0.02% sodium azide.
Storage Instructions	GRB10 antibody can be stored at 4°C for three months and -20°C, stable for up to one year. Avoid repeated freeze-thaw cycles. Antibodies should not be exposed to prolonged high temperatures.
Host	Rabbit
Uniprot ID	Q13322

Technical Details

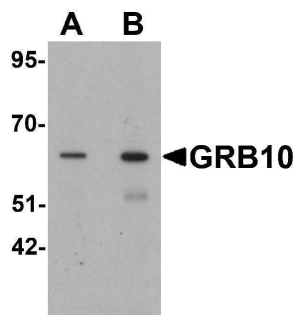
Immunogen	GRB10 antibody was raised against a 17 amino acid synthetic peptide near the carboxy terminus of human GRB10. The immunogen is located within amino acids 440 - 490 of GRB10.
Predicted Reactive Species	Pig
Cross Reactivity	At least three isoforms of GRB10 are known to exist; this antibody will detect all three isoforms.
Isotype	IgG
Form	Liquid
Concentration	1 mg/mL
Purification	GRB10 Antibody is affinity chromatography purified via peptide column.

Suggested Dilutions

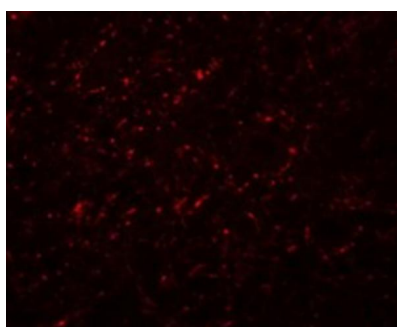
GRB10 antibody can be used for detection of GRB10 by Western blot at 1 - 2 ug/mL. Antibody can also be used for immunofluorescence starting at 20 ug/mL. For immunofluorescence start at 20 ug/mL.

Antibody validated: Western Blot in human samples and Immunofluorescence in rat samples. All other applications and species not yet tested. Optimal dilutions for each application should be determined by the researcher.

Anti-GRB10 Antibody (A01663) Images



Western blot analysis of GRB10 in SK-N-SH cell lysate with GRB10 antibody at (A) 1 and (B) 2 ug/mL.



Immunofluorescence of GRB10 in rat brain cells with GRB10 antibody at 20 ug/mL.

Submit a product review to [Biocompare.com](https://www.biocompare.com)

Submit a review of this product to [Biocompare.com](https://www.biocompare.com) to receive a \$20 Amazon.com giftcard! Your reviews help your fellow scientists make the right decisions. Thank you for your contribution.



Anti-GRB10 Antibody

For Research Use Only. Not for use in diagnostic procedures.