

Anti-CCKBR Antibody Picoband™

Catalog Number: A01677-1

About CCKBR

The cholecystokinin B receptor, also known as CCKBR or CCK2, is a protein that in humans is encoded by the CCKBR gene. This gene encodes a G-protein coupled receptor for gastrin and cholecystokinin (CCK), regulatory peptides of the brain and gastrointestinal tract. This protein is a type B gastrin receptor, which has a high affinity for both sulfated and nonsulfated CCK analogs and is found principally in the central nervous system and the gastrointestinal tract. Alternative splicing results in multiple transcript variants. A misspliced transcript variant including an intron has been observed in cells from colorectal and pancreatic tumors.

Overview

Product Name	Anti-CCKBR Antibody Picoband™
Reactive Species	Human, Mouse, Rat
Description	Boster Bio Anti-CCKBR Antibody Picoband™ catalog # A01677-1. Tested in Flow Cytometry, IHC, ICC, WB applications. This antibody reacts with Human, Mouse, Rat.
Application	Flow Cytometry, IHC, ICC, WB
Clonality	Polyclonal
Formulation	Each vial contains 4mg Trehalose, 0.9mg NaCl, 0.2mg Na ₂ HPO ₄ , 0.05mg NaN ₃ .
Storage Instructions	Store at -20°C for one year from date of receipt. After reconstitution, at 4°C for one month. It can also be aliquotted and stored frozen at -20°C for six months. Avoid repeated freeze-thaw cycles.
Host	Rabbit
Uniprot ID	P32239

Technical Details

Immunogen	A synthetic peptide corresponding to a sequence in the middle region of human CCKBR, which shares 80% and 90% amino acid (aa) sequence identity with mouse and rat CCKBR, respectively.
Predicted Reactive Species	Human
Recommended Detection Systems	Boster recommends Enhanced Chemiluminescent Kit with anti-Rabbit IgG (EK1002) for Western blot, and HRP Conjugated anti-Rabbit IgG Super Vision Assay Kit (SV0002-1) for IHC(F) and ICC.
Cross Reactivity	No cross-reactivity with other proteins.
Isotype	Rabbit IgG
Form	Lyophilized
Concentration	Adding 0.2 ml of distilled water will yield a concentration of 500 ug/ml.

Purification	Immunogen affinity purified.
Suggested Dilutions	<p>Dilute the sample so that the expected range of concentrations fall within the detection range of this kit.</p> <p>If the expected range of concentration is unknown, a pilot test should be conducted to decide the optimal dilution ratio for your samples.</p> <p>Some PubMed article(s) citing the expression level of this target are as follows:</p> <p>Boster Bio's internal QC testing used:</p> <p>Western blot, 0.1-0.5ug/ml</p> <p>Immunohistochemistry (Frozen Section), 0.5-1ug/ml, Human</p> <p>Immunocytochemistry, 0.5-1ug/ml, Human</p> <p>Flow Cytometry, 1-3ug/1x10⁶ cells, Human</p>

Anti-CCKBR Antibody Picoband™ (A01677-1) Images

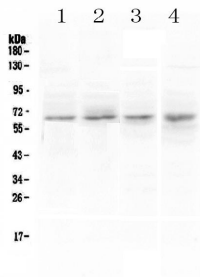


Figure 1. Western blot analysis of CCKBR using anti-CCKBR antibody (A01677-1).

Electrophoresis was performed on a 5-20% SDS-PAGE gel at 70V (Stacking gel) / 90V (Resolving gel) for 2-3 hours. The sample well of each lane was loaded with 50ug of sample under reducing conditions.

Lane 1: human PANC-1 whole cell lysates,

Lane 2: human U-87MG whole cell lysates,

Lane 3: human COLO-320 whole cell lysates,

Lane 4: human SGC-7901 whole cell lysates.

After Electrophoresis, proteins were transferred to a Nitrocellulose membrane at 150mA for 50-90 minutes.

Blocked the membrane with 5% Non-fat Milk/ TBS for 1.5 hour at RT. The membrane was incubated with rabbit anti-CCKBR antigen affinity purified polyclonal antibody (Catalog # A01677-1) at 0.5 ug/mL overnight at 4°C, then washed with TBS-0.1%Tween 3 times with 5 minutes each and probed with a goat anti-rabbit IgG-HRP secondary antibody at a dilution of 1:10000 for 1.5 hour at RT. The signal is developed using an Enhanced Chemiluminescent detection (ECL) kit (Catalog # EK1002) with Tanon 5200 system. A specific band was detected for CCKBR at approximately 64KD. The expected band size for CCKBR is at 48KD.

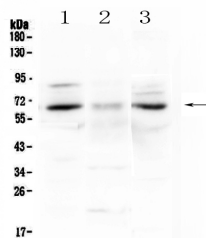


Figure 2. Western blot analysis of CCKBR using anti-CCKBR antibody (A01677-1).

Electrophoresis was performed on a 5-20% SDS-PAGE gel at 70V (Stacking gel) / 90V (Resolving gel) for 2-3 hours. The sample well of each lane was loaded with 50ug of sample under reducing conditions.

Lane 1: rat brain tissue lysates,

Lane 2: rat stomach tissue lysates,

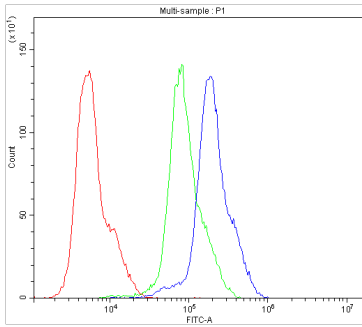
Lane 3: mouse brain tissue lysates.

After Electrophoresis, proteins were transferred to a Nitrocellulose membrane at 150mA for 50-90 minutes.

Blocked the membrane with 5% Non-fat Milk/ TBS for 1.5 hour at RT. The membrane was incubated with rabbit anti-CCKBR antigen affinity purified polyclonal antibody (Catalog # A01677-1) at 0.5 ug/mL overnight at 4°C, then washed with TBS-0.1%Tween 3 times with 5 minutes each and probed with a goat anti-rabbit IgG-HRP secondary antibody at a dilution of 1:10000 for 1.5 hour at RT. The signal is developed using an Enhanced Chemiluminescent detection (ECL) kit (Catalog # EK1002) with Tanon 5200 system. A specific band was detected for CCKBR at approximately 64KD. The expected band size for CCKBR is at 48KD.

Figure 3. Flow Cytometry analysis of LOVO cells using anti-CCKBR antibody (A01677-1).

Overlay histogram showing LOVO cells stained with A01677-1 (Blue line). The cells were blocked with 10% normal goat serum. And then incubated with rabbit anti-CCKBR Antibody (A01677-1, 1ug/1x10⁶ cells) for 30 min at



20°C. DyLight®488 conjugated goat anti-rabbit IgG (BA1127, 5-10ug/1x10⁶ cells) was used as secondary antibody for 30 minutes at 20°C. Isotype control antibody (Green line) was rabbit IgG (1ug/1x10⁶) used under the same conditions. Unlabelled sample (Red line) was also used as a control.

1 Publications Citing This Product

1. PubMed ID: 26136952, Changes in FABP1 and gastrin receptor expression in the testes of rats that have undergone electrical injury

Visit bosterbio.com/anti-cckbr-picoband-trade-antibody-a01677-1-boster.html to see all 1 publications.

Submit a product review to Biocompare.com

Submit a review of this product to Biocompare.com to receive a \$20 Amazon.com giftcard! Your reviews help your fellow scientists make the right decisions. Thank you for your contribution.



Anti-CCKBR Antibody [™]