

Anti-SREBF2 Antibody

Catalog Number: A01678

About SREBF2

The sterol regulatory element binding transcription factor 2 (SREBF2) is a transcription factor that binds to the sterol regulatory element-1 (SRE1), which is a decamer flanking the low density lipoprotein receptor gene and some genes involved in sterol biosynthesis (1,2). The related protein SREBF1 also binds SRE1 and activates transcription in an additive fashion to SREBF2 (2). SREBF2 has been more closely associated with cholesterol synthesis and accumulation, while the SREBF1 proteins are important in the regulation of genes involved in lipid metabolism (3).

Overview

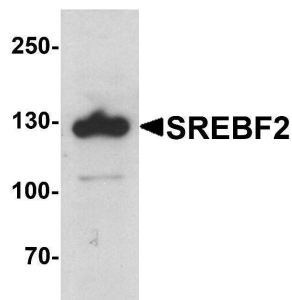
Product Name	Anti-SREBF2 Antibody
Reactive Species	Human, Mouse
Description	Boster Bio Anti-SREBF2 Antibody (Catalog # A01678). Tested in ELISA, WB, IHC-P, IF applications. This antibody reacts with Human, Mouse.
Application	ELISA, IF, IHC-P, WB
Clonality	Polyclonal
Formulation	SREBF2 antibody is supplied in PBS containing 0.02% sodium azide.
Storage Instructions	SREBF2 antibody can be stored at 4°C for three months and -20°C, stable for up to one year.
Host	Rabbit
Uniprot ID	Q12772

Technical Details

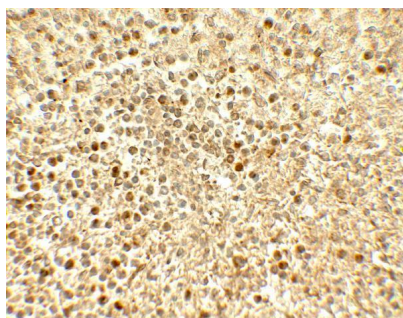
Immunogen	SREBF2 antibody was raised against a 15 amino acid peptide near the center of human SREBF2. The immunogen is located within amino acids 440 - 490 of SREBF2.
Predicted Reactive Species	Rat
Cross Reactivity	SREBF2 antibody is human and mouse reactive. At least three isoforms of SREBF2 are known to exist. SREBF2 antibody is predicted not to cross-react with SREBF1.
Isotype	IgG
Form	Liquid
Concentration	1 mg/mL
Purification	SREBF2 antibody is affinity chromatography purified via peptide column.
Suggested Dilutions	SREBF2 antibody can be used for detection of SREBF2 by Western blot at 1 - 2 ug/ml. Antibody can

also be used for Immunohistochemistry at 5 ug/mL. For Immunofluorescence start at 20 ug/mL.
Antibody validated: Western Blot in human samples; Immunohistochemistry in human samples and
Immunofluorescence in human samples. All other applications and species not yet tested. Optimal
dilutions for each application should be determined by the researcher.

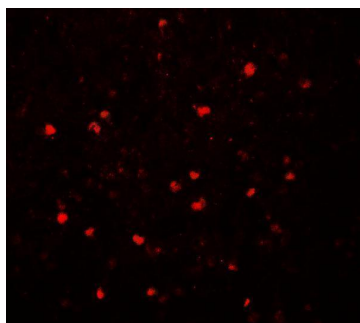
Anti-SREBF2 Antibody (A01678) Images



Western blot analysis of SREBF2 in PC-3 cell lysate with SREBF1 antibody at 1 ug/ml.



Immunohistochemistry of SREBF2 in human spleen tissue with SREBF2 antibody at 5 ug/mL.



Immunofluorescence of SREBF2 in human spleen tissue with SREBF2 antibody at 20 ug/mL.

Submit a product review to [Biocompare.com](https://www.biocompare.com)

Submit a review of this product to [Biocompare.com](https://www.biocompare.com) to receive a \$20 Amazon.com giftcard! Your reviews help your fellow scientists make the right decisions. Thank you for your contribution.



Anti-SREBF2 Antibody

For Research Use Only. Not for use in diagnostic procedures.