

## Anti-Antileukoproteinase SLPI Antibody

Catalog Number: A01682

### About SLPI

Secretory leukocyte protease inhibitor (SLPI) is produced at mucosal surfaces, primarily the upper respiratory tract and is thought to play an important role in the antiprotease defense mechanism of the lung. SLPI forms inhibitory complexes with numerous proteolytic enzymes such as neutrophil elastase, and has been shown to possess anti-inflammatory, anti-viral, and antibacterial activities. Its expression in oral epithelial cells is stimulated by HIV-1 gp120, suggesting that SLPI is a component of the oral mucosal response to HIV-1. In peripheral blood monocytes, SLPI can inhibit NF-kappaB activation by inhibiting IkappaB degradation in the cytoplasm and competing for NF-kappaB binding sites in the nucleus. This attenuation of the inflammatory response may also act to suppress liver metastases and other cancer cell invasions, but promote blood-borne metastasis via an invasion-independent pathway.

### Overview

Product Name	Anti-Antileukoproteinase SLPI Antibody
Reactive Species	Human, Mouse
Description	Boster Bio Anti-Antileukoproteinase SLPI Antibody (Catalog # A01682). Tested in ELISA, WB, IHC-P applications. This antibody reacts with Human, Mouse.
Application	ELISA, IHC-P, WB
Clonality	Polyclonal
Formulation	SLPI Antibody is supplied in PBS containing 0.02% sodium azide.
Storage Instructions	SLPI antibody can be stored at 4°C for three months and -20°C, stable for up to one year. Avoid repeated freeze-thaw cycles. Antibodies should not be exposed to prolonged high temperatures.
Host	Rabbit
Uniprot ID	P03973

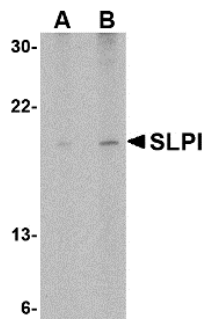
### Technical Details

Immunogen	SLPI antibody was raised against a 17 amino acid synthetic peptide from near the center of human SLPI. The immunogen is located within amino acids 60 - 110 of SLPI.
Predicted Reactive Species	Rat
Isotype	IgG
Form	Liquid
Concentration	1 mg/mL
Purification	SLPI Antibody is affinity chromatography purified via peptide column.

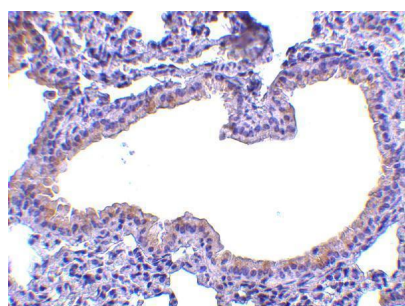
Suggested Dilutions

SLPI antibody can be used for detection of SLPI by Western blot at 1 - 2 ug/mL. Antibody can also be used for immunohistochemistry starting at 10 ug/mL.  
Antibody validated: Western Blot in human samples and Immunohistochemistry in mouse samples.  
All other applications and species not yet tested. Optimal dilutions for each application should be determined by the researcher.

## Anti-Antileukoproteinase SLPI Antibody (A01682) Images



Western blot analysis of SLPI in Daudi cell lysate with SLPI antibody at (A) 1 and (B) 2 ug/mL.



Immunohistochemistry of SLPI in mouse lung tissue with SLPI antibody at 10 ug/mL.

### Submit a product review to Biocompare.com

Submit a review of this product to Biocompare.com to receive a \$20 Amazon.com giftcard! Your reviews help your fellow scientists make the right decisions. Thank you for your contribution.



### Anti-Antileukoproteinase SLPI Antibody

For Research Use Only. Not for use in diagnostic procedures.