

## Anti-Endoribonuclease ZC3H12A ZC3H12A Antibody

Catalog Number: A01688

### About ZC3H12A

ZC3H12A, also known as MCPIP, is an essential member of a family of novel CCCH-zinc finger proteins that regulate macrophage activation and may be involved in host immunity and inflammatory diseases. ZC3H12A has RNase activity that prevents some immune disorders by directly affecting the mRNA stability of interleukins such as IL-6 and IL12p40. Mice lacking the ZC3H12A gene suffered from severe anemia, and most dies within 12 weeks. Overexpression of ZC3H12A causes ER stress and induces a number of genes involved in apoptosis and autophagy, including JNK, PUMA, and beclin-1 in cardiac myoblasts, leading to cell death. ZC3H12A can also induce adipogenesis in 3T3-L1 pre-adipocytes in the absence of PPAPgamma, demonstrating the complex roles ZC3H12A plays.

### Overview

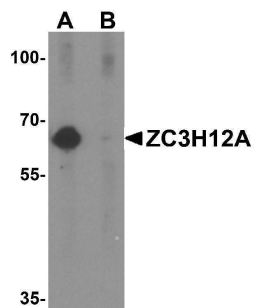
Product Name	Anti-Endoribonuclease ZC3H12A ZC3H12A Antibody
Reactive Species	Human
Description	Boster Bio Anti-Endoribonuclease ZC3H12A ZC3H12A Antibody (Catalog # A01688). Tested in ELISA, WB applications. This antibody reacts with Human.
Application	ELISA, WB
Clonality	Polyclonal
Formulation	ZC3H12A Antibody is supplied in PBS containing 0.02% sodium azide.
Storage Instructions	ZC3H12A antibody can be stored at 4°C for three months and -20°C, stable for up to one year. Avoid repeated freeze-thaw cycles. Antibodies should not be exposed to prolonged high temperatures.
Host	Rabbit
Uniprot ID	Q5D1E8

### Technical Details

Immunogen	ZC3H12A antibody was raised against a 17 amino acid synthetic peptide near the center of human ZC3H12A. The immunogen is located within amino acids 330 - 380 of ZC3H12A.
Predicted Reactive Species	Bovine
Cross Reactivity	This ZC3H12A antibody is predicted to have no cross-reactivity to other members of the ZC3H12 protein family.
Isotype	IgG
Form	Liquid

Concentration	1 mg/mL
Purification	ZC3H12A Antibody is affinity chromatography purified via peptide column.
Suggested Dilutions	ZC3H12A antibody can be used for detection of ZC3H12A by Western blot at 1 - 2 ug/mL. Antibody validated: Western Blot in human samples. All other applications and species not yet tested. Optimal dilutions for each application should be determined by the researcher.

## Anti-Endoribonuclease ZC3H12A ZC3H12A Antibody (A01688) Images



Western blot analysis of ZC3H12A in K562 cell lysate with ZC3H12A antibody at 1 ug/mL in (A) the absence and (B) the presence of blocking peptide.

### Submit a product review to Biocompare.com

Submit a review of this product to Biocompare.com to receive a \$20 Amazon.com giftcard! Your reviews help your fellow scientists make the right decisions. Thank you for your contribution.



Anti-Endoribonuclease ZC3H12A ZC3H12A Antibody

For Research Use Only. Not for use in diagnostic procedures.