

Anti-40S ribosomal protein SA RPSA Antibody

Catalog Number: A01691

About RPSA

The 40S ribosomal protein SA (RPSA) is a high-affinity, non-integrin family, laminin receptor, also known as 67 kDa laminin receptor or 37 kDa laminin receptor precursor (37LRP) (1). Laminins, a family of extracellular matrix glycoproteins, are the major noncollagenous constituent of basement membranes and have been implicated in a variety of biological processes including cell adhesion, differentiation, migration, signaling, neurite outgrowth and metastasis (2). RPSA is overexpressed in multiple types of cancers and has recently been shown to act as a cancer-specific death receptor (3).

Overview

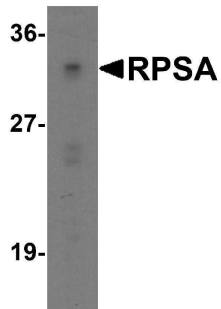
Product Name	Anti-40S ribosomal protein SA RPSA Antibody
Reactive Species	Human, Mouse
Description	Boster Bio Anti-40S ribosomal protein SA RPSA Antibody (Catalog # A01691). Tested in ELISA, WB, IHC-P, IF applications. This antibody reacts with Human, Mouse.
Application	ELISA, IF, IHC-P, WB
Clonality	Polyclonal
Formulation	RPSA antibody is supplied in PBS containing 0.02% sodium azide.
Storage Instructions	RPSA antibody can be stored at 4°C for three months and -20°C, stable for up to one year.
Host	Rabbit
Uniprot ID	P08865

Technical Details

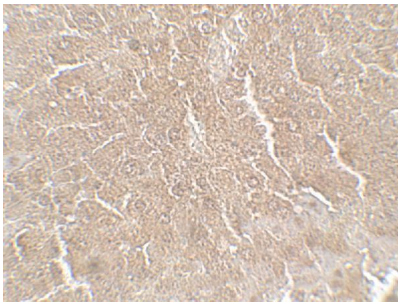
Immunogen	RPSA antibody was raised against a 17 amino acid peptide near the carboxy terminus of human RPSA. The immunogen is located within amino acids 190 - 240 of RPSA.
Predicted Reactive Species	Bovine, Chicken, Pig, Rat, Sheep
Cross Reactivity	RPSA antibody is human, mouse and rat reactive.
Isotype	IgG
Form	Liquid
Concentration	1 mg/mL
Purification	RPSA antibody is affinity chromatography purified via peptide column.
Suggested Dilutions	RPSA antibody can be used for detection of RPSA by Western blot at 1 - 2 ug/ml. Antibody can also

be used for Immunohistochemistry starting at 5 ug/mL. For immunofluorescence start at 20 ug/mL. Antibody validated: Western Blot in human samples; Immunohistochemistry in mouse samples and Immunofluorescence in mouse samples. All other applications and species not yet tested. Optimal dilutions for each application should be determined by the researcher.

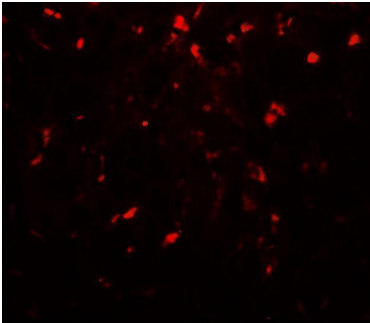
Anti-40S ribosomal protein SA RPSA Antibody (A01691) Images



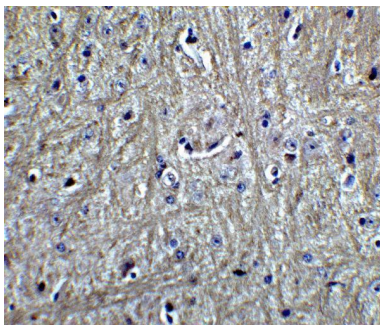
Western blot analysis of RPSA in Caco-2 cell lysate with RPSA antibody at 1 ug/ml.



Immunohistochemistry of RPSA in mouse liver tissue with RPSA antibody at 5 ug/mL.

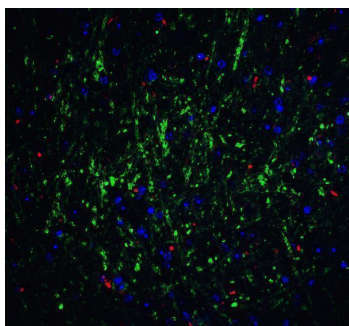


Immunofluorescence of RPSA in mouse liver tissue with RPSA antibody at 20 ug/mL.



Immunohistochemistry of RPSA in mouse brain tissue with RPSA Antibody at 5 ug/mL.

Immunofluorescence of RPSA in mouse brain tissue with RPSA Antibody at 20 ug/mL. Green: RPSA antibody (A01691) Red: Phalloidin staining Blue: DAPI staining



Submit a product review to [Biocompare.com](https://www.biocompare.com)

Submit a review of this product to [Biocompare.com](https://www.biocompare.com) to receive a \$20 Amazon.com giftcard! Your reviews help your fellow scientists make the right decisions. Thank you for your contribution.



Anti-40S ribosomal protein SA RPSA Antibody

For Research Use Only. Not for use in diagnostic procedures.