

Anti-Laminin-R (Q215) RPSA Antibody

Catalog Number: A01691-1

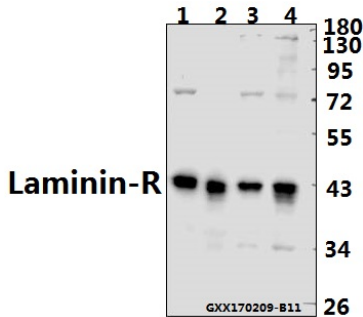
Overview

Product Name	Anti-Laminin-R (Q215) RPSA Antibody
Reactive Species	Human, Mouse, Rat
Description	Boster Bio Anti-Laminin-R (Q215) RPSA Antibody catalog # A01691-1. Tested in WB,IHC,IF applications. This antibody reacts with Human,Mouse,Rat.
Application	IF, IHC, WB
Clonality	Polyclonal
Formulation	Rabbit IgG, 1mg/ml in PBS with 0.02% sodium azide, 50% glycerol, pH7.2
Storage Instructions	Store at -20°C for one year. For short term storage and frequent use, store at 4°C for up to one month. Avoid repeated freeze-thaw cycles.
Host	Rabbit
Uniprot ID	P08865

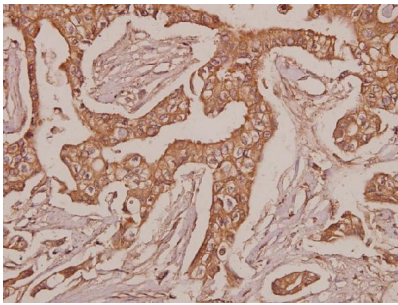
Technical Details

Immunogen	Synthetic peptide, corresponding to amino acids 181-230 of Human Laminin-R.
Cross Reactivity	No cross reactivity with other proteins.
Isotype	IgG
Form	Liquid
Concentration	1 mg/ml
Purification	The antibody was affinity-purified from rabbit antiserum by affinity-chromatography using epitope-specific immunogen and the purity is > 95% (by SDS-PAGE).
Suggested Dilutions	WB: 1:500-1:1000 IHC: 1:50-1:200 IF: 1:50-1:200

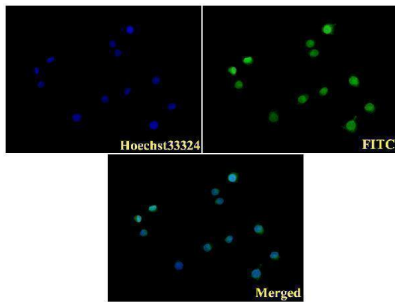
Anti-Laminin-R (Q215) RPSA Antibody (A01691-1) Images



Western blot (WB) analysis of Laminin-R (Q215) polyclonal antibody at 1:500 dilution Lane1:CT26 whole cell lysate(40ug) Lane2:PC12 whole cell lysate(40ug) Lane3:A549 whole cell lysate(40ug) Lane4:HEK293T whole cell lysate(40ug)



Immunohistochemistry (IHC) analyzes of Laminin-R (Q215) pAb in paraffin-embedded human breast carcinoma tissue at 1:50.



IF image of BS3689 stained A549 cells. The cells were 4% paraformaldehyde fixed (20 min) and then incubated in 10% normal goat serum for 1h to permeabilise the cells and block non-specific protein-protein interactions. The cells were then incubated with the antibody Laminin-R (Q215) #BS3689(1:100) at 10µg/ml overnight at +4°C. The secondary antibody (Green) was Goat Anti-Rabbit IgG (H+L) FITC #BS10950 used at a 1/1000 dilution for 1h. Hoechst33342 #BD5011 was used to stain the cell nuclei (blue).

Submit a product review to Biocompare.com

Submit a review of this product to Biocompare.com to receive a \$20 Amazon.com giftcard! Your reviews help your fellow scientists make the right decisions. Thank you for your contribution.



Anti-Laminin-R (Q215) RPSA Antibody

For Research Use Only. Not for use in diagnostic procedures.