

Anti-HSP90B (phospho-S254) HSP90AB1 Antibody

Catalog Number: A01692S254

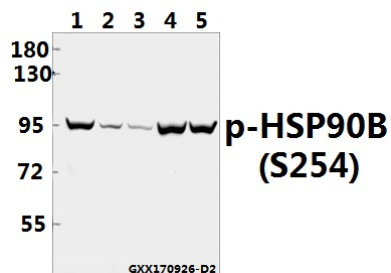
Overview

Product Name	Anti-HSP90B (phospho-S254) HSP90AB1 Antibody
Reactive Species	Human, Mouse, Rat
Description	Boster Bio Anti-HSP90B (phospho-S254) HSP90AB1 Antibody catalog # A01692S254. Tested in WB,IHC,IF applications. This antibody reacts with Human,Mouse,Rat.
Application	IF, IHC, WB
Clonality	Polyclonal
Formulation	Rabbit IgG, 1mg/ml in PBS with 0.02% sodium azide, 50% glycerol, pH7.2
Storage Instructions	Store at -20°C for one year. For short term storage and frequent use, store at 4°C for up to one month. Avoid repeated freeze-thaw cycles.
Host	Rabbit
Uniprot ID	P08238

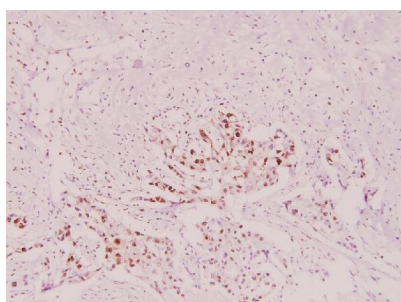
Technical Details

Immunogen	Synthetic phosphopeptide derived from human HSP90B around the phosphorylation site of Serine 254.
Cross Reactivity	No cross reactivity with other proteins.
Isotype	IgG
Form	Liquid
Concentration	1 mg/ml
Purification	The antibody was affinity-purified from rabbit antiserum by affinity-chromatography using epitope-specific immunogen and the purity is > 95% (by SDS-PAGE).
Suggested Dilutions	WB: 1:1000-1:5000 IHC: 1:50-1:200 IF: 1:50-1:200

Anti-HSP90B (phospho-S254) HSP90AB1 Antibody (A01692S254) Images



Western blot (WB) analysis of HSP90B (phospho-S254) pAb at 1:5000 dilution Lane1:MCF-7 whole cell lysate(40ug) Lane2:The Testis tissue lysate of Mouse(40ug) Lane3:The Testis tissue lysate of Rat(40ug) Lane4:HEK293T whole cell lysate(40ug) Lane5:Hela whole cell lysate(40ug)



Immunohistochemistry (IHC) analyzes of HSP90B (phospho-S254) polyclonal antibody in paraffin-embedded human breast carcinoma tissue at 1:100.

Submit a product review to Biocompare.com

Submit a review of this product to Biocompare.com to receive a \$20 Amazon.com giftcard! Your reviews help your fellow scientists make the right decisions. Thank you for your contribution.



Anti-HSP90B (phospho-S254) HSP90AB1 Antibody

For Research Use Only. Not for use in diagnostic procedures.