

Anti-Cot (phospho-T290) MAP3K8 Antibody

Catalog Number: A01696T290

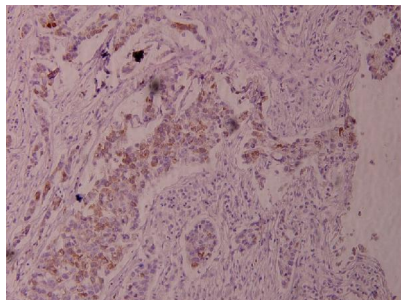
Overview

Product Name	Anti-Cot (phospho-T290) MAP3K8 Antibody
Reactive Species	Human, Mouse, Rat
Description	Boster Bio Anti-Cot (phospho-T290) MAP3K8 Antibody catalog # A01696T290. Tested in IHC,IF applications. This antibody reacts with Human,Mouse,Rat.
Application	IF, IHC
Clonality	Polyclonal
Formulation	Rabbit IgG, 1mg/ml in PBS with 0.02% sodium azide, 50% glycerol, pH7.2
Storage Instructions	Store at -20°C for one year. For short term storage and frequent use, store at 4°C for up to one month. Avoid repeated freeze-thaw cycles.
Host	Rabbit
Uniprot ID	P41279

Technical Details

Immunogen	Synthetic phosphopeptide derived from human Cot around the phosphorylation site of Threonine 290.
Cross Reactivity	No cross reactivity with other proteins.
Isotype	IgG
Form	Liquid
Concentration	1 mg/ml
Purification	The antibody was affinity-purified from rabbit antiserum by affinity-chromatography using epitope-specific immunogen and the purity is > 95% (by SDS-PAGE).
Suggested Dilutions	IHC: 1:50-1:200 IF: 1:50-1:200

Anti-Cot (phospho-T290) MAP3K8 Antibody (A01696T290) Images



Immunohistochemistry (IHC) analyzes of p-Cot (T290) pAb in paraffin-embedded human breast carcinoma tissue at 1:100.

Submit a product review to [Biocompare.com](https://www.biocompare.com)

Submit a review of this product to [Biocompare.com](https://www.biocompare.com) to receive a \$20 Amazon.com giftcard! Your reviews help your fellow scientists make the right decisions. Thank you for your contribution.



Anti-Cot (phospho-T290) MAP3K8 Antibody

For Research Use Only. Not for use in diagnostic procedures.