

## Anti-Phospho-Cot (T290) MAP3K8 Antibody

Catalog Number: A01696T290-1

### Overview

Product Name	Anti-Phospho-Cot (T290) MAP3K8 Antibody
Reactive Species	Human, Mouse, Rat
Description	Boster Bio Anti-Phospho-Cot (T290) MAP3K8 Antibody catalog # A01696T290-1. Tested in ELISA, IF, IHC, WB applications. This antibody reacts with Human, Mouse, Rat.
Application	ELISA, IF, IHC, WB
Clonality	Polyclonal
Formulation	Liquid in PBS containing 50% glycerol, 0.5% BSA and 0.02% sodium azide.
Storage Instructions	Store at -20°C for one year. For short term storage and frequent use, store at 4°C for up to one month. Avoid repeated freeze-thaw cycles.
Host	Rabbit
Uniprot ID	P41279

### Technical Details

Immunogen	Synthesized peptide derived from human Cot around the phosphorylation site of T290.
Isotype	IgG
Form	Liquid
Concentration	1 mg/ml
Purification	The antibody was affinity-purified from rabbit antiserum by affinity-chromatography using epitope-specific immunogen.
Suggested Dilutions	<p>Dilute the sample so that the expected range of concentrations fall within the detection range of this kit.</p> <p>If the expected range of concentration is unknown, a pilot test should be conducted to decide the optimal dilution ratio for your samples.</p> <p>Some PubMed article(s) citing the expression level of this target are as follows: Boster Bio's internal QC testing used WB 1:500-1:2000 IHC 1:100-1:300 IF 1:200-1:1000 ELISA 1:40000</p> <p>For protocols, please visit <a href="https://www.bosterbio.com/protocol-and-troubleshooting/">https://www.bosterbio.com/protocol-and-troubleshooting/</a></p>



## Anti-Phospho-Cot (T290) MAP3K8 Antibody (A01696T290-1) Images

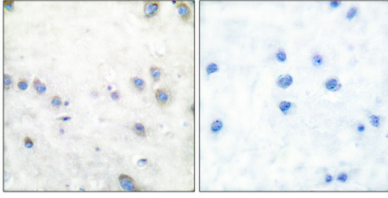


Figure 2. Immunohistochemistry validation of MAP3K8 using Anti-Phospho-Cot (T290) MAP3K8 Antibody (A01696T290-1).

Immunohistochemical analysis of paraffin-embedded Human breast cancer. Antibody was diluted at 1:100 (4°C)

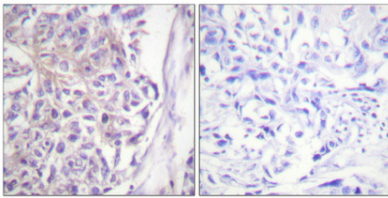


Figure 3. Immunohistochemistry validation of MAP3K8 using Anti-Phospho-Cot (T290) MAP3K8 Antibody (A01696T290-1).

Immunohistochemical analysis of paraffin-embedded Human breast cancer. Antibody was diluted at 1:100 (4°C)

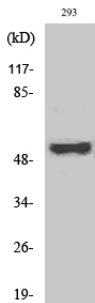


Figure 1. Western blotting validation for Anti-Phospho-Cot (T290) MAP3K8 Antibody A01696T290-1

Western Blot (WB) analysis of specific cells using Phospho-Cot (T290) polyclonal antibody. Electrophoresis was performed on a SDS-PAGE gel. To determine SDS-PAGE gel concentration

### Submit a product review to Biocompare.com

Submit a review of this product to Biocompare.com to receive a \$20 Amazon.com giftcard! Your reviews help your fellow scientists make the right decisions. Thank you for your contribution.



Anti-Phospho-Cot (T290) MAP3K8 Antibody