

Anti-Matrix Gla protein MGP Antibody

Catalog Number: A01702

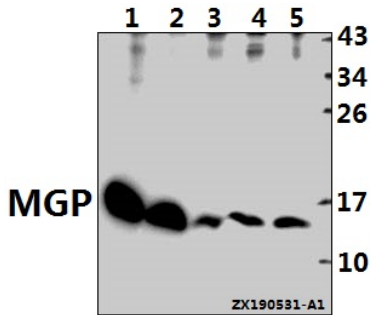
Overview

Product Name	Anti-Matrix Gla protein MGP Antibody
Reactive Species	Human, Mouse, Rat
Description	Boster Bio Anti-Matrix Gla protein MGP Antibody catalog # A01702. Tested in WB,IHC,ICC/IF applications. This antibody reacts with Human,Mouse,Rat.
Application	IF, IHC, ICC, WB
Clonality	Polyclonal
Formulation	Rabbit IgG, 1mg/ml in PBS with 0.02% sodium azide, 50% glycerol, pH7.2
Storage Instructions	Store at -20°C for one year. For short term storage and frequent use, store at 4°C for up to one month. Avoid repeated freeze-thaw cycles.
Host	Rabbit
Uniprot ID	P08493

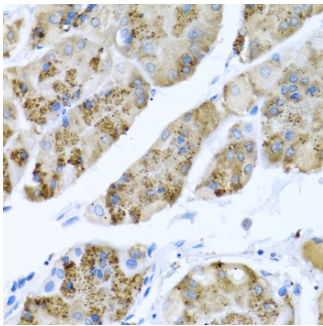
Technical Details

Immunogen	Recombinant fusion protein of human MGP(NP_000891.2).
Cross Reactivity	No cross reactivity with other proteins.
Isotype	IgG
Form	Liquid
Concentration	1 mg/ml
Purification	The antibody was affinity-purified from rabbit antiserum by affinity-chromatography using epitope-specific immunogen and the purity is > 95% (by SDS-PAGE).
Suggested Dilutions	WB: 1:500-1:2000 IHC: 1:100-1:200 ICC/IF: 1:50-1:200

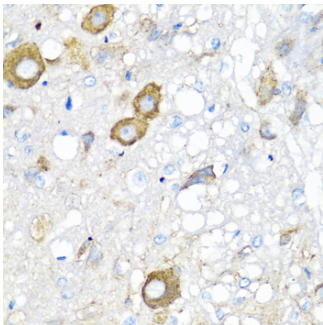
Anti-Matrix Gla protein MGP Antibody (A01702) Images



Western blot (WB) analysis of MGP pAb at 1:500 dilution
Lane1:CT26 whole cell lysate(20ug) Lane2:H9C2 whole cell lysate(40ug) Lane3:HeLa whole cell lysate(40ug)
Lane4:MCF-7 whole cell lysate(40ug) Lane5:PC3 whole cell lysate(40ug)



Immunohistochemistry of paraffin-embedded human breast cancer using MGP Rabbit pAb at dilution of 1:100 .Perform high pressure antigen retrieval with 10 mM citrate buffer pH 6.0 before commencing with IHC staining protocol.



Immunohistochemistry of paraffin-embedded rat breast using MGP Rabbit pAb at dilution of 1:100 .Perform high pressure antigen retrieval with 10 mM citrate buffer pH 6.0 before commencing with IHC staining protocol.

Submit a product review to [Biocompare.com](https://www.biocompare.com)

Submit a review of this product to [Biocompare.com](https://www.biocompare.com) to receive a \$20 Amazon.com giftcard! Your reviews help your fellow scientists make the right decisions. Thank you for your contribution.



Anti-Matrix Gla protein MGP Antibody

For Research Use Only. Not for use in diagnostic procedures.