

## Anti-Insulin-like 3 INSL3 Antibody

Catalog Number: A01712

### Overview

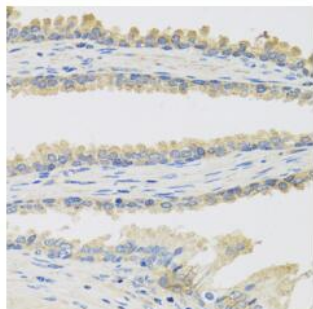
Product Name	Anti-Insulin-like 3 INSL3 Antibody
Reactive Species	Human, Mouse, Rat
Description	Boster Bio Anti-Insulin-like 3 INSL3 Antibody catalog # A01712. Tested in IHC-P, ICC/IF, ELISA applications. This antibody reacts with Human, Mouse, Rat.
Application	ELISA, IF, IHC-P, ICC
Clonality	Polyclonal
Formulation	Rabbit IgG, 1mg/ml in PBS with 0.02% sodium azide, 50% glycerol, pH7.2
Storage Instructions	Store at -20°C for one year. For short term storage and frequent use, store at 4°C for up to one month. Avoid repeated freeze-thaw cycles.
Host	Rabbit
Uniprot ID	P51460

### Technical Details

Immunogen	Recombinant fusion protein containing a sequence corresponding to amino acids 1-131 of human INSL3 (NP_005534.2).
Cross Reactivity	No cross reactivity with other proteins.
Isotype	IgG
Form	Liquid
Concentration	1 mg/ml
Purification	The antibody was affinity-purified from rabbit antiserum by affinity-chromatography using epitope-specific immunogen and the purity is > 95% (by SDS-PAGE).
Suggested Dilutions	IHC-P 1:50 - 1:100 ICC/IF 1:50 - 1:100 ELISA 1:5000 - 1:10000

## Anti-Insulin-like 3 INSL3 Antibody (A01712) Images

---



Immunohistochemistry analysis of paraffinembedded Human prostate using INSL3 pAb at dilution of 1:100 (40xlens).

### Submit a product review to Biocompare.com

---

Submit a review of this product to Biocompare.com to receive a \$20 Amazon.com giftcard! Your reviews help your fellow scientists make the right decisions. Thank you for your contribution.



Anti-Insulin-like 3 INSL3 Antibody

For Research Use Only. Not for use in diagnostic procedures.