

## Anti-SLC1A2 Antibody

Catalog Number: A01713

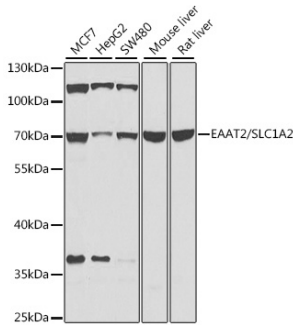
### Overview

Product Name	Anti-SLC1A2 Antibody
Reactive Species	Human, Mouse, Rat
Description	Boster Bio Anti-SLC1A2 Antibody catalog # A01713. Tested in WB applications. This antibody reacts with Human,Mouse,Rat.
Application	WB
Clonality	Polyclonal
Formulation	Rabbit IgG, 1mg/ml in PBS with 0.02% sodium azide, 50% glycerol, pH7.2
Storage Instructions	Store at -20°C for one year. For short term storage and frequent use, store at 4°C for up to one month. Avoid repeated freeze-thaw cycles.
Host	Rabbit
Uniprot ID	P43004

### Technical Details

Immunogen	Recombinant fusion protein of human EAAT2/EAAT2/SLC1A2(NP_004162.2).
Cross Reactivity	No cross reactivity with other proteins.
Isotype	IgG
Form	Liquid
Concentration	1 mg/ml
Purification	The antibody was affinity-purified from rabbit antiserum by affinity-chromatography using epitope-specific immunogen and the purity is > 95% (by SDS-PAGE).
Suggested Dilutions	WB: 1:500-1:5000

## Anti-SLC1A2 Antibody (A01713) Images



Western blot analysis of extracts of various cell lines, using EAAT2/EAAT2/SLC1A2 antibody at 1:1000 dilution. Secondary antibody: HRP Goat Anti-Rabbit IgG at 1:10000 dilution. Lysates/proteins: 25ug per lane. Blocking buffer: 3% nonfat dry milk in TBST. Detection: ECL Basic Kit. Exposure time: 15s.

## 1 Publications Citing This Product

1. PubMed ID: 25371754, Ding Y, Zhang K, Liu S, Zhang Q, Ma C, Bruce Ic, Zhang X. Exp Ther Med. 2014 Dec;8(6):1909-1913. Epub 2014 Oct 15. Tumor Necrosis Factor-?? Promotes The Expression Of Excitatory Amino-Acid Transporter 2 In Astrocytes: Optimal Concentration And Inc...

Visit [bosterbio.com/anti-slc1a2-antibody-a01713-boster.html](http://bosterbio.com/anti-slc1a2-antibody-a01713-boster.html) to see all 1 publications.

## Submit a product review to Biocompare.com

Submit a review of this product to Biocompare.com to receive a \$20 Amazon.com giftcard! Your reviews help your fellow scientists make the right decisions. Thank you for your contribution.



Anti-SLC1A2 Antibody

For Research Use Only. Not for use in diagnostic procedures.