

Anti-IFN-gamma alpha IFNGR1 Antibody

Catalog Number: A01716-3

About IFNGR1

Regulates and initiates biosynthesis of N-acetylneuraminic acid (NeuAc), a precursor of sialic acids. Plays an essential role in early development By similarity. Required for normal sialylation in hematopoietic cells. Sialylation is implicated in cell adhesion, signal transduction, tumorigenicity and metastatic behavior of malignant cells.

Lucka L., FEBS Lett. 454:341-344(1999).

Seppala R., Am. J. Hum. Genet. 64:1563-1569(1999).

Huizing M., Submitted (OCT-2000) to the EMBL/GenBank/DDBJ databases.

Overview

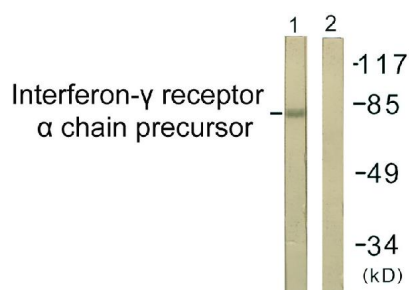
Product Name	Anti-IFN-gamma alpha IFNGR1 Antibody
Reactive Species	Human, Monkey, Mouse, Rat
Description	Boster Bio Anti-IFN-gamma alpha IFNGR1 Antibody catalog # A01716-3. Tested in ELISA, IF, IHC, WB applications. This antibody reacts with Human, Monkey, Mouse, Rat.
Application	ELISA, IF, IHC, WB
Clonality	Polyclonal
Formulation	Liquid in PBS containing 50% glycerol, 0.5% BSA and 0.02% sodium azide.
Storage Instructions	Store at -20°C for one year. For short term storage and frequent use, store at 4°C for up to one month. Avoid repeated freeze-thaw cycles.
Host	Rabbit
Uniprot ID	P15260

Technical Details

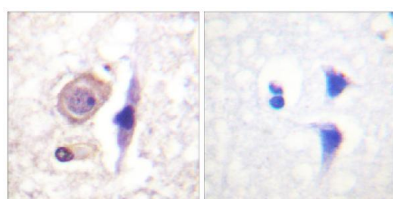
Immunogen	Synthesized peptide derived from human IFN-gammaRalpha around the non-phosphorylation site of Y457.
Predicted Reactive Species	Boar, Bovine, Canine, Golden Hamster
Cross Reactivity	No cross reactivity with other proteins.
Isotype	IgG
Form	Liquid
Concentration	1 mg/ml

Purification	The antibody was affinity-purified from rabbit antiserum by affinity-chromatography using epitope-specific immunogen.
Suggested Dilutions	<p>Dilute the sample so that the expected range of concentrations fall within the detection range of this kit.</p> <p>If the expected range of concentration is unknown, a pilot test should be conducted to decide the optimal dilution ratio for your samples.</p> <p>Some PubMed article(s) citing the expression level of this target are as follows:</p> <p>Boster Bio's internal QC testing used:</p> <p>WB 1:500-1:2000</p> <p>IHC 1:100-1:300</p> <p>IF 1:200-1:1000</p> <p>ELISA 1:40000</p>

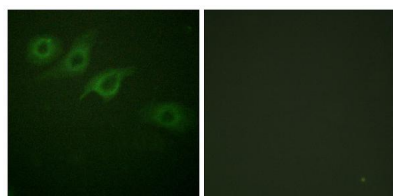
Anti-IFN-gamma alpha IFNGR1 Antibody (A01716-3) Images



Western blot analysis of lysates from COS7 cells, using Interferon-gamma Receptor alpha chain Antibody. The lane on the right is blocked with the synthesized peptide.



Immunohistochemistry analysis of paraffin-embedded human brain tissue, using Interferon-gamma Receptor alpha chain Antibody. The picture on the right is blocked with the synthesized peptide.



Immunofluorescence analysis of HepG2 cells, using Interferon-gamma Receptor alpha chain Antibody. The picture on the right is blocked with the synthesized peptide.

Submit a product review to Biocompare.com

Submit a review of this product to Biocompare.com to receive a \$20 Amazon.com giftcard! Your reviews help your fellow scientists make the right decisions. Thank you for your contribution.



Anti-IFN-gamma alpha IFNGR1 Antibody