

Anti-Sam 68 (Y145) KHDRBS1 Antibody

Catalog Number: A01717Y145

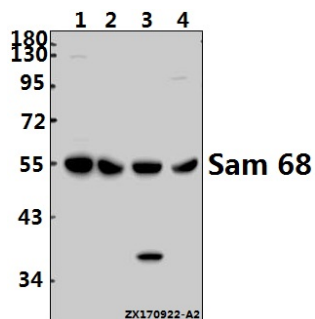
Overview

Product Name	Anti-Sam 68 (Y145) KHDRBS1 Antibody
Reactive Species	Human, Mouse, Rat
Description	Boster Bio Anti-Sam 68 (Y145) KHDRBS1 Antibody catalog # A01717Y145. Tested in WB,IHC applications. This antibody reacts with Human,Mouse,Rat.
Application	IHC, WB
Clonality	Polyclonal
Formulation	Rabbit IgG, 1mg/ml in PBS with 0.02% sodium azide, 50% glycerol, pH7.2
Storage Instructions	Store at -20°C for one year. For short term storage and frequent use, store at 4°C for up to one month. Avoid repeated freeze-thaw cycles.
Host	Rabbit
Uniprot ID	Q07666

Technical Details

Immunogen	Synthetic peptide, corresponding to amino acids 120-170 of Human Sam 68.
Cross Reactivity	No cross reactivity with other proteins.
Isotype	IgG
Form	Liquid
Concentration	1 mg/ml
Purification	The antibody was affinity-purified from rabbit antiserum by affinity-chromatography using epitope-specific immunogen and the purity is > 95% (by SDS-PAGE).
Suggested Dilutions	WB: 1:500-1:1000 IHC: 1:50-1:200

Anti-Sam 68 (Y145) KHDRBS1 Antibody (A01717Y145) Images



Western blot (WB) analysis of Sam 68 (Y145) pAb at 1:1000 dilution Lane1:HCC827 whole cell lysate(40ug) Lane2:Hela whole cell lysate(40ug) Lane3:H9C2 whole cell lysate(40ug) Lane4:3T3-L1 whole cell lysate(40ug)

Submit a product review to Biocompare.com

Submit a review of this product to Biocompare.com to receive a \$20 Amazon.com giftcard! Your reviews help your fellow scientists make the right decisions. Thank you for your contribution.



Anti-Sam 68 (Y145) KHDRBS1 Antibody

For Research Use Only. Not for use in diagnostic procedures.