

## Anti-ALPP/ALPPL2 Antibody

Catalog Number: A01718-1

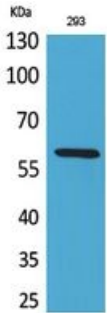
### Overview

Product Name	Anti-ALPP/ALPPL2 Antibody
Reactive Species	Human, Mouse
Description	Boster Bio Anti-ALPP/ALPPL2 Antibody catalog # A01718-1. Tested in WB, ELISA applications. This antibody reacts with Human, Mouse.
Application	ELISA, WB
Clonality	Polyclonal
Formulation	Liquid in PBS containing 50% glycerol, 0.5% stabilizing protein and 0.02% sodium azide. *This antibody is supplied in a stabilized formulation. Compatibility with conjugation reactions depends on the chemistry of the conjugation method used. For conjugation methods that are not compatible with the stabilizing components present in this formulation, a carrier-free antibody format is required.
Storage Instructions	Store at -20°C for one year. For short term storage and frequent use, store at 4°C for up to one month. Avoid repeated freeze-thaw cycles.
Host	Rabbit
Uniprot ID	P05187

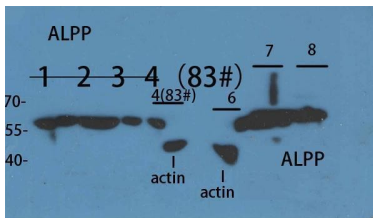
### Technical Details

Immunogen	The antiserum was produced against synthesized peptide derived from the N-terminal region of human ALPP/ALPPL2. AA range:1-50
Isotype	IgG
Form	Liquid
Concentration	1 mg/ml
Purification	Immunogen affinity purified
Suggested Dilutions	WB 1:500-1:2000 ELISA 1:20000

## Anti-ALPP/ALPPL2 Antibody (A01718-1) Images



Western Blot (WB) analysis of 293 cells using ALPP/ALPPL2 Polyclonal antibody.



Western Blot (WB) analysis of sample using ALPP/ALPPL2 Polyclonal antibody.

1 2 3 4 customer's cell  
6 293T  
7 HeLa  
8 K562

## 1 Publications Citing This Product

1. PubMed ID: 10.1002/pmic.201700443, Impacts of Dietary Pleurotus eryngii Polysaccharide on Nutrient Digestion, Metabolism, and Immune Response of the Small Intestine and Colon—An iTRAQ-Based Proteomic Analysis

Visit [bosterbio.com/anti-alpp-alppl2-antibody-a01718-1-boster.html](http://bosterbio.com/anti-alpp-alppl2-antibody-a01718-1-boster.html) to see all 1 publications.

## Submit a product review to Biocompare.com

Submit a review of this product to Biocompare.com to receive a \$20 Amazon.com giftcard! Your reviews help your fellow scientists make the right decisions. Thank you for your contribution.



Anti-ALPP/ALPPL2 Antibody

For Research Use Only. Not for use in diagnostic procedures.