

Anti-PIEZO2 PIEZO1 Antibody

Catalog Number: A01721

About PIEZO2

PIEZO2 is a mechanically-activated ion channel that links mechanical forces to biological signals. The encoded protein contains thirty transmembrane domains and likely functions as part of mechanically-activated (MA) cation channels. These channels serve to connect mechanical forces to biological signals. The encoded protein quickly adapts MA currents in somatosensory neurons. Defects in this gene are a cause of type 5 distal arthrogryposis.

Overview

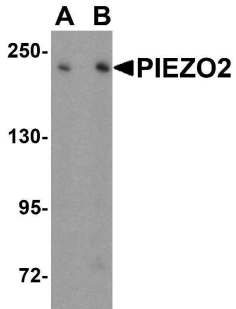
Product Name	Anti-PIEZO2 PIEZO1 Antibody
Reactive Species	Human, Mouse
Description	Boster Bio Anti-PIEZO2 PIEZO1 Antibody (Catalog # A01721). Tested in ELISA, WB applications. This antibody reacts with Human, Mouse.
Application	ELISA, WB
Clonality	Polyclonal
Formulation	PIEZO2 Antibody is supplied in PBS containing 0.02% sodium azide.
Storage Instructions	PIEZO2 antibody can be stored at 4°C for three months and -20°C, stable for up to one year. Avoid repeated freeze-thaw cycles. Antibodies should not be exposed to prolonged high temperatures.
Host	Rabbit
Uniprot ID	Q92508

Technical Details

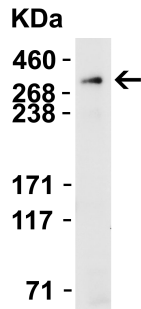
Immunogen	PIEZO2 antibody was raised against a peptide corresponding to 19 amino acids near the amino terminus of human PIEZO2.
Predicted Reactive Species	Bovine, Chicken, Pig, Rat, Sheep
Cross Reactivity	PIEZO2 Antibody is predicted to not cross-react with PIEZO1.
Isotype	IgG
Form	Liquid
Concentration	1 mg/mL
Purification	PIEZO2 Antibody is affinity chromatography purified via peptide column.
Suggested Dilutions	PIEZO2 antibody can be used for Western blot at 1 - 2 ug/mL.

Antibody validated: Western Blot in human and mouse samples. All other applications and species not yet tested. Optimal dilutions for each application should be determined by the researcher.

Anti-PIEZO2 PIEZO1 Antibody (A01721) Images



Western blot analysis of PIEZO2 in SK-N-SH cell lysate with PIEZO2 antibody at (A) 1 and (B) 2 ug/mL.



WB Validation in Mouse Skeletal Muscle Loading: 15 ug of mouse skeletal muscle lysate Antibodies: PIEZO2 A01721-1701, 2 ug/mL, 1 h incubation at RT in 5% NFDN/TBST. Secondary: Goat Anti-Rabbit IgG HRP conjugate at 1:10000 dilution. Exposure: 30 min

Submit a product review to [Biocompare.com](https://www.biocompare.com)

Submit a review of this product to [Biocompare.com](https://www.biocompare.com) to receive a \$20 Amazon.com giftcard! Your reviews help your fellow scientists make the right decisions. Thank you for your contribution.



Anti-PIEZO2 PIEZO1 Antibody

For Research Use Only. Not for use in diagnostic procedures.