

## Anti-CYP4F2 Antibody

Catalog Number: A01737

### About CYP4F2

Dual specificity kinase that activates the JUN kinases MAPK8 (JNK1) and MAPK9 (JNK2) as well as MAPK14 (p38) but not MAPK1 (ERK2) or MAPK3 (ERK1).

Wang W, et al. (2002) Mol Cell Biol; 22(10): 3389-403.

Leung IW, et al. (2001) J Biol Chem; 276(3): 1961-7.

### Overview

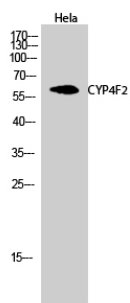
Product Name	Anti-CYP4F2 Antibody
Reactive Species	Human
Description	Boster Bio Anti-CYP4F2 Antibody catalog # A01737. Tested in WB applications. This antibody reacts with Human.
Application	WB
Clonality	Polyclonal
Formulation	Liquid in PBS containing 50% glycerol, 0.5% BSA and 0.02% sodium azide.
Storage Instructions	Store at -20°C for one year. For short term storage and frequent use, store at 4°C for up to one month. Avoid repeated freeze-thaw cycles.
Host	Rabbit
Uniprot ID	P78329

### Technical Details

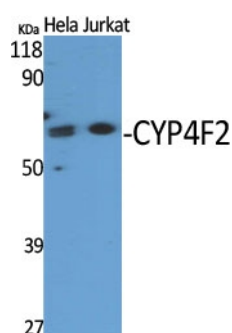
Immunogen	Synthesized peptide derived from the N-terminal region of human CYP4F2. at AA range: 10-90
Predicted Reactive Species	Bovine, Canine, Equine, Guinea Pig, Pig, Rabbit, Sheep
Isotype	IgG
Form	Liquid
Concentration	1 mg/ml
Purification	Immunogen affinity purified
Suggested Dilutions	Dilute the sample so that the expected range of concentrations fall within the detection range of this kit. If the expected range of concentration is unknown, a pilot test should be conducted to decide the

optimal dilution ratio for your samples.  
Some PubMed article(s) citing the expression level of this target are as follows:  
Boster Bio's internal QC testing used:  
WB, 1:500-1:2000

## Anti-CYP4F2 Antibody (A01737) Images



Western Blot (WB) analysis of HeLa cells using CYP4F2 Polyclonal antibody.



Western Blot (WB) analysis of specific cells using CYP4F2 Polyclonal antibody.

## Submit a product review to Biocompare.com

Submit a review of this product to Biocompare.com to receive a \$20 Amazon.com giftcard! Your reviews help your fellow scientists make the right decisions. Thank you for your contribution.



Anti-CYP4F2 Antibody