

## Anti-Eg5 (phospho-T926) KIF11 Antibody

Catalog Number: A01754T926

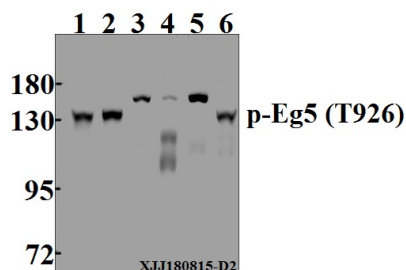
### Overview

Product Name	Anti-Eg5 (phospho-T926) KIF11 Antibody
Reactive Species	Human, Mouse, Rat
Description	Boster Bio Anti-Eg5 (phospho-T926) KIF11 Antibody catalog # A01754T926. Tested in WB applications. This antibody reacts with Human, Mouse, Rat.
Application	WB
Clonality	Polyclonal
Formulation	Rabbit IgG, 1mg/ml in PBS with 0.02% sodium azide, 50% glycerol, pH7.2
Storage Instructions	Store at -20°C for one year. For short term storage and frequent use, store at 4°C for up to one month. Avoid repeated freeze-thaw cycles.
Host	Rabbit
Uniprot ID	P52732

### Technical Details

Immunogen	Synthetic phosphopeptide derived from human Eg5 around the phosphorylation site of Threonine 926
Cross Reactivity	No cross reactivity with other proteins.
Isotype	IgG
Form	Liquid
Concentration	1 mg/ml
Purification	The antibody was affinity-purified from rabbit antiserum by affinity-chromatography using epitope-specific immunogen and the purity is > 95% (by SDS-PAGE).
Suggested Dilutions	WB: 1:500-1:1000

## Anti-Eg5 (phospho-T926) KIF11 Antibody (A01754T926) Images



Western blot (WB) analysis of p-Eg5 (T926) pAb at 1:500 dilution Lane1:HCT116 whole cell lysate(40µg) Lane2:HepG2 whole cell lysate(40µg) Lane3:CT-26 whole cell lysate(40µg) Lane4:C6 whole cell lysate(40µg) Lane5:LOVO whole cell lysate(40µg) Lane6:MCF-7 whole cell lysate(40µg)

### Submit a product review to Biocompare.com

Submit a review of this product to Biocompare.com to receive a \$20 Amazon.com giftcard! Your reviews help your fellow scientists make the right decisions. Thank you for your contribution.



Anti-Eg5 (phospho-T926) KIF11 Antibody

For Research Use Only. Not for use in diagnostic procedures.