

## Anti-Human CD2AP DyLight® 488 conjugated Antibody

Catalog Number: A01756-Dyl488

### About CD2AP

CD2-associated protein is a protein that in humans is encoded by the CD2AP gene. This gene encodes a scaffolding molecule that regulates the actin cytoskeleton. The protein directly interacts with filamentous actin and a variety of cell membrane proteins through multiple actin binding sites, SH3 domains, and a proline-rich region containing binding sites for SH3 domains. The cytoplasmic protein localizes to membrane ruffles, lipid rafts, and the leading edges of cells. It is implicated in dynamic actin remodeling and membrane trafficking that occurs during receptor endocytosis and cytokinesis. Haploinsufficiency of this gene is implicated in susceptibility to glomerular disease.

### Overview

|                      |   |
|----------------------|---|
| Product Name         | Anti-Human CD2AP DyLight® 488 conjugated Antibody   |
| Reactive Species     | Human   |
| Description          | Boster Bio Anti-Human CD2AP DyLight® 488 conjugated Antibody catalog # A01756-Dyl488. Tested in Flow Cytometry applications. This antibody reacts with Human. |
| Conjugate            | DyLight®488   |
| Application          | Flow Cytometry  |
| Clonality            | Polyclonal  |
| Formulation          | Each vial contains 50% glycerol, 0.9% NaCl, 0.2% Na <sub>2</sub> HPO <sub>4</sub> , 0.02% NaN <sub>3</sub> .  |
| Storage Instructions | At -20°C for one year from date of receipt. Avoid repeated freezing and thawing. Protect from light.  |
| Host                 | Rabbit  |
| Uniprot ID           | Q9Y5K6  |

### Technical Details

|                            |  |
|----------------------------|--|
| Immunogen                  | E. coli-derived human CD2AP recombinant protein (Position: K253-K337).                                   |
| Predicted Reactive Species | Human  |
| Cross Reactivity           | No cross-reactivity with other proteins.   |
| Isotype                    | Rabbit IgG   |
| Form                       | Liquid   |
| Concentration              | 0.5-1mg/ml, actual concentration vary by lot. Use suggested dilution ratio to decide dilution procedure. |
| Suggested Dilutions        | Dilute the sample so that the expected range of concentrations fall within the detection range of this   |

kit.

If the expected range of concentration is unknown, a pilot test should be conducted to decide the optimal dilution ratio for your samples.

Some PubMed article(s) citing the expression level of this target are as follows:

Boster Bio's internal QC testing used:

Flow Cytometry, 1-3ug/1x10<sup>6</sup> cells

## Anti-Human CD2AP DyLight® 488 conjugated Antibody (A01756-Dyl488) Images

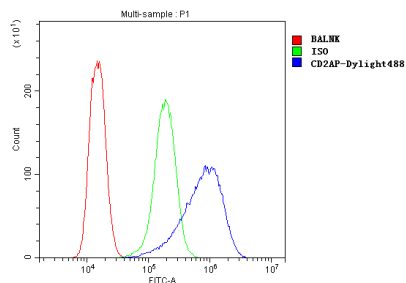


Figure 1. Flow Cytometry analysis of A431 cells using anti-Human CD2AP antibody (A01756-Dyl488). Overlay histogram showing A431 cells stained with A01756-Dyl488 (Blue line). The cells were blocked with 10% normal goat serum. And then incubated with rabbit anti-Human CD2AP Antibody (A01756-Dyl488,  $1\mu\text{g}/1 \times 10^6$  cells) for 30 min at  $20^\circ\text{C}$ . Isotype control antibody (Green line) was rabbit IgG ( $1\mu\text{g}/1 \times 10^6$ ) used under the same conditions. Unlabelled sample (Red line) was also used as a control.

### Submit a product review to Biocompare.com

Submit a review of this product to Biocompare.com to receive a \$20 Amazon.com giftcard! Your reviews help your fellow scientists make the right decisions. Thank you for your contribution.



Anti-Human CD2AP DyLight® 488 conjugated Antibody