

Anti-AES Antibody

Catalog Number: A01757

About AES

Adhesion to extracellular matrix regulates cell survival through both integrin engagement and appropriate cell spreading. Anoikis is the molecular mechanism of apoptosis induced by integrin detachment. Amino-terminal enhancer of split (AES) is a member of the Groucho/ transducin-like enhancer of split (TLE) family of transcriptional regulators, a group of transcriptional co-repressors that play important roles in neurogenesis, segmentation, and sex determination. AES forms a complex with Bit1 (Bcl-2 inhibitor of transcription 1), a mitochondrial protein that is released into the cytoplasm upon onset of apoptosis. It has been suggested that this complex turns off a survival-promoting gene transcription program controlled by the TLE protein family. Interestingly, apoptosis of cells transfected with AES and Bit1 could be inhibited if the cells were allowed to attach to fibronectin through the alpha5beta1 integrin suggesting that the Bit1-AES pathway contributing to anoikis is regulated by integrins, and in particular, the alpha5beta1 integrin.

Overview

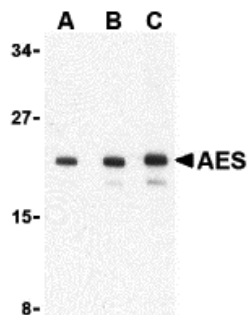
Product Name	Anti-AES Antibody
Reactive Species	Human, Mouse, Rat
Description	Boster Bio Anti-AES Antibody (Catalog # A01757). Tested in ELISA, WB, ICC, IF applications. This antibody reacts with Human, Mouse, Rat.
Application	ELISA, IF, ICC, WB
Clonality	Polyclonal
Formulation	AES Antibody is supplied in PBS containing 0.02% sodium azide.
Storage Instructions	AES antibody can be stored at 4°C for three months and -20°C, stable for up to one year. Avoid repeated freeze-thaw cycles. Antibodies should not be exposed to prolonged high temperatures.
Host	Rabbit
Uniprot ID	Q08117

Technical Details

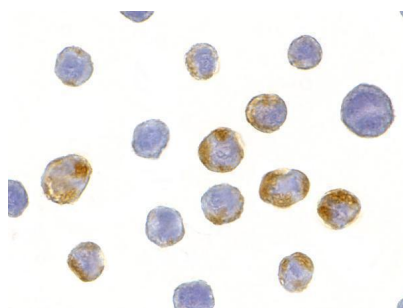
Immunogen	AES antibody was raised against a 16 amino acid synthetic peptide from near the carboxy terminus of human AES. The immunogen is located within the last 50 amino acids of AES.
Predicted Reactive Species	Bovine, Pig
Isotype	IgG
Form	Liquid
Concentration	1 mg/mL

Purification	AES Antibody is affinity chromatography purified via peptide column.
Suggested Dilutions	AES antibody can be used for the detection of AES by Western blot at 1 - 4 ug/mL. Antibody can also be used for immunocytochemistry starting at 10 ug/mL. For immunofluorescence start at 20 ug/mL. Antibody validated: Western Blot in human samples; Immunocytochemistry in human samples and Immunofluorescence in human samples. All other applications and species not yet tested. Optimal dilutions for each application should be determined by the researcher.

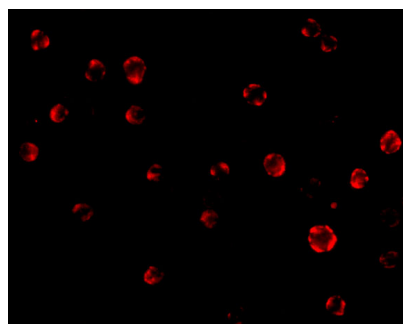
Anti-AES Antibody (A01757) Images



Western blot analysis of AES in 293 cell lysate with AES antibody at (A) 1, (B) 2 and (C) 4 ug/mL.



Immunocytochemistry of AES in HeLa cells with AES antibody at 10 ug/mL.



Immunofluorescence of AES in HeLa cells with AES antibody at 20 ug/mL.

Submit a product review to [Biocompare.com](https://www.biocompare.com)

Submit a review of this product to [Biocompare.com](https://www.biocompare.com) to receive a \$20 Amazon.com giftcard! Your reviews help your fellow scientists make the right decisions. Thank you for your contribution.



Anti-AES Antibody

For Research Use Only. Not for use in diagnostic procedures.