

Anti-Prominin-1 PROM1 Antibody

Catalog Number: A01767-1

About PROM1

PROM1 is a pentaspan transmembrane glycoprotein that localizes to membrane protrusions and is often expressed on adult stem cells, where it is thought to function in maintaining stem cell properties by suppressing differentiation (1). Mutations in this gene have been shown to result in retinitis pigmentosa (2). Expression of this gene is also associated with several types of cancer (3).

Overview

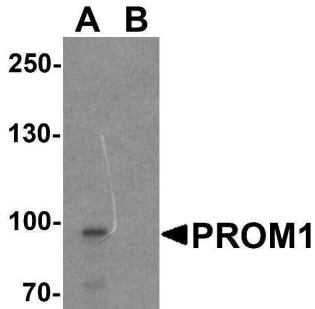
Product Name	Anti-Prominin-1 PROM1 Antibody
Reactive Species	Human, Mouse, Rat
Description	Boster Bio Anti-Prominin-1 PROM1 Antibody (Catalog # A01767-1). Tested in ELISA, WB, ICC, IF applications. This antibody reacts with Human, Mouse, Rat.
Application	ELISA, IF, ICC, WB
Clonality	Polyclonal
Formulation	PROM1 Antibody is supplied in PBS containing 0.02% sodium azide.
Storage Instructions	PROM1 antibody can be stored at 4°C up to one year. Antibodies should not be exposed to prolonged high temperatures.
Host	Rabbit
Uniprot ID	O43490

Technical Details

Immunogen	PROM1 antibody was raised against an 18 amino acid peptide near the carboxy terminus of human PROM1. The immunogen is located within the last 50 amino acids of PROM1.
Predicted Reactive Species	Bovine, Pig
Cross Reactivity	PROM1 antibody is human, mouse and rat reactive. Multiple isoforms of PROM1 are known to exist.
Isotype	IgG
Form	Liquid
Concentration	1 mg/mL
Purification	PROM1 antibody is affinity chromatography purified via peptide column.
Suggested Dilutions	PROM1 antibody can be used for detection of PROM1 by Western blot at 1 - 2 ug/ml. Antibody can also be used for Immunocytochemistry at 2.5 ug/mL. For Immunofluorescence start at 20 ug/mL.

Antibody validated: Western Blot in human samples; Immunocytochemistry in human samples and Immunofluorescence in human samples. All other applications and species not yet tested. Optimal dilutions for each application should be determined by the researcher.

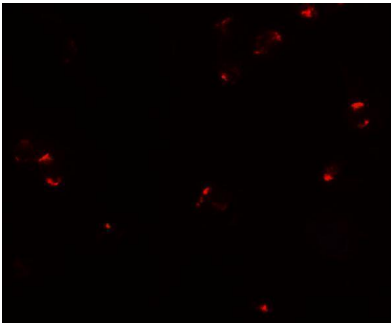
Anti-Prominin-1 PROM1 Antibody (A01767-1) Images



Western blot analysis of PROM1 in Jurkat cell lysate with PROM1 antibody at 1 ug/ml in (A) the absence and (B) the presence of blocking peptide.



Immunocytochemistry of PROM1 in Jurkat cells with PROM1 antibody at 2.5 ug/mL.



Immunofluorescence of PROM1 in Jurkat cells with PROM1 antibody at 20 ug/mL.

Submit a product review to [Biocompare.com](https://www.biocompare.com)

Submit a review of this product to [Biocompare.com](https://www.biocompare.com) to receive a \$20 Amazon.com giftcard! Your reviews help your fellow scientists make the right decisions. Thank you for your contribution.



Anti-Prominin-1 PROM1 Antibody

For Research Use Only. Not for use in diagnostic procedures.