

Anti-Importin subunit alpha-1 KPNA2 Antibody

Catalog Number: A01776

About KPNA2

Karyopherin, a cytosolic and heterodimeric protein complex consisting of alpha and beta subunits, is responsible for targeting proteins with nuclear localization signals to the nuclear pore complex by an energy requiring, Ran-dependent mechanism. The alpha subunit and imported substrate enter the nucleus and accumulate in the nucleoplasm, while the beta subunit accumulates at the NPC. KPNA2 is the alpha subunit 2 of karyopherin, which forms a complex with importin subunit beta-1 and functions as a cargo carrier that transports various complexes from cytoplasm into nucleus. It is ubiquitously expressed and contains an IBB/importin beta domain, ten Armadillo repeats that bind "cargo" and three intervening nuclear localization sequences (NLSs). It has recently been reported to play an important role in tumorigenesis and tumor progression.

Overview

Product Name	Anti-Importin subunit alpha-1 KPNA2 Antibody
Reactive Species	Human, Mouse, Rat
Description	Boster Bio Anti-Importin subunit alpha-1 KPNA2 Antibody (Catalog # A01776). Tested in ELISA, WB, IHC-P, IF applications. This antibody reacts with Human, Mouse, Rat.
Application	ELISA, IF, IHC-P, WB
Clonality	Polyclonal
Formulation	KPNA2 Antibody is supplied in PBS containing 0.02% sodium azide.
Storage Instructions	KPNA2 antibody can be stored at 4°C for three months and -20°C, stable for up to one year. Avoid repeated freeze-thaw cycles. Antibodies should not be exposed to prolonged high temperatures.
Host	Rabbit
Uniprot ID	P52292

Technical Details

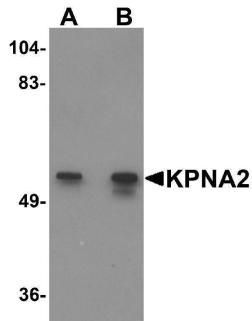
Immunogen	KPNA2 antibody was raised against a 15 amino acid synthetic peptide near the amino terminus of human KPNA2. The immunogen is located within amino acids 40 - 90 of KPNA2.
Predicted Reactive Species	Mouse
Isotype	IgG
Form	Liquid
Concentration	1 mg/mL
Purification	KPNA2 Antibody is affinity chromatography purified via peptide column.

Suggested Dilutions

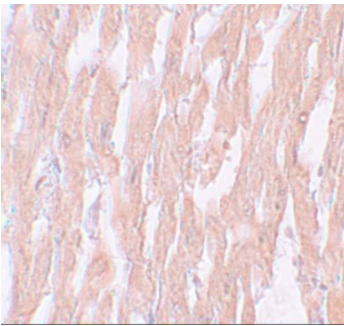
KPNA2 antibody can be used for detection of KPNA2 by Western blot at 1 - 2 ug/mL. Antibody can also be used for immunohistochemistry starting at 5 ug/mL. For immunofluorescence start at 20 ug/mL.

Antibody validated: Western Blot in human and rat samples; Immunohistochemistry in human samples and Immunofluorescence in human samples. All other applications and species not yet tested. Optimal dilutions for each application should be determined by the researcher.

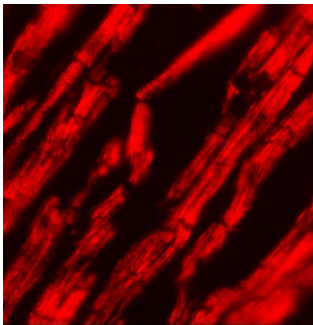
Anti-Importin subunit alpha-1 KPNA2 Antibody (A01776) Images



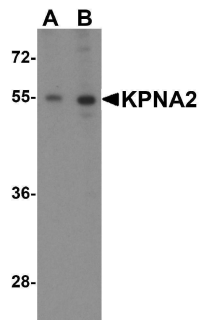
Western blot analysis of KPNA2 in rat heart tissue lysate with KPNA2 antibody at (A) 1 and (B) 2 ug/mL.



Immunohistochemistry of KPNA2 in human heart tissue with KPNA2 antibody at 5 ug/mL.



Immunofluorescence of KPNA2 in human heart tissue with KPNA2 antibody at 20 ug/mL.



Western blot analysis of KPNA2 expression in Daudi cell lysate with KPNA2 antibody at (A) 1 and (B) 2 ug/ml.

Submit a product review to [Biocompare.com](https://www.biocompare.com)

Submit a review of this product to [Biocompare.com](https://www.biocompare.com) to receive a \$20 Amazon.com giftcard! Your reviews help your fellow scientists make the right decisions. Thank you for your contribution.



Anti-Importin subunit alpha-1 KPNA2 Antibody

For Research Use Only. Not for use in diagnostic procedures.