

## Anti-Msx-2 Antibody

Catalog Number: A01783

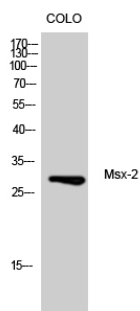
### Overview

Product Name	Anti-Msx-2 Antibody
Reactive Species	Human, Mouse
Description	Boster Bio Anti-Msx-2 Antibody catalog # A01783. Tested in ELISA, IHC, WB applications. This antibody reacts with Human, Mouse.
Application	ELISA, IF, IHC, WB
Clonality	Polyclonal
Formulation	Liquid in PBS containing 50% glycerol, 0.5% stabilizing protein and 0.02% sodium azide. *This antibody is supplied in a stabilized formulation. Compatibility with conjugation reactions depends on the chemistry of the conjugation method used. For conjugation methods that are not compatible with the stabilizing components present in this formulation, a carrier-free antibody format is required.
Storage Instructions	Store at -20°C for one year. For short term storage and frequent use, store at 4°C for up to one month. Avoid repeated freeze-thaw cycles.
Host	Rabbit
Uniprot ID	P35548

### Technical Details

Immunogen	Synthesized peptide derived from the Internal region of human Msx-2.
Cross Reactivity	No cross reactivity with other proteins.
Isotype	IgG
Form	Liquid
Concentration	1 mg/ml
Purification	The antibody was affinity-purified from rabbit antiserum by affinity-chromatography using epitope-specific immunogen.
Suggested Dilutions	WB 1:500-1:2000 IHC 1:100-1:300 ELISA 1:20000 IF 1:50-200

## Anti-Msx-2 Antibody (A01783) Images



Western Blot analysis of CoLo cells using Msx-2 Polyclonal Antibody



Immunohistochemical analysis of paraffin-embedded human spleen. 1, Tris-EDTA, pH9.0 was used for antigen retrieval. 2 Antibody was diluted at 1:200 (4° overnight). 3, Secondary antibody was diluted at 1:200 (room temperature, 45min).

### Submit a product review to Biocompare.com

Submit a review of this product to Biocompare.com to receive a \$20 Amazon.com giftcard! Your reviews help your fellow scientists make the right decisions. Thank you for your contribution.



### Anti-Msx-2 Antibody

For Research Use Only. Not for use in diagnostic procedures.