

Anti-CD166 ALCAM Antibody

Catalog Number: A01788

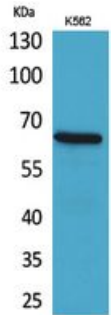
Overview

Product Name	Anti-CD166 ALCAM Antibody
Reactive Species	Human, Mouse, Rat
Description	Boster Bio Anti-CD166 ALCAM Antibody catalog # A01788. Tested in IF, WB, ELISA applications. This antibody reacts with Human, Mouse, Rat.
Application	ELISA, IF, WB
Clonality	Polyclonal
Formulation	Liquid in PBS containing 50% glycerol, 0.5% stabilizing protein and 0.02% sodium azide. *This antibody is supplied in a stabilized formulation. Compatibility with conjugation reactions depends on the chemistry of the conjugation method used. For conjugation methods that are not compatible with the stabilizing components present in this formulation, a carrier-free antibody format is required.
Storage Instructions	Store at -20°C for one year. For short term storage and frequent use, store at 4°C for up to one month. Avoid repeated freeze-thaw cycles.
Host	Rabbit
Uniprot ID	Q13740

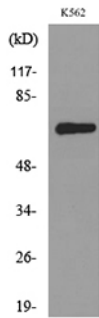
Technical Details

Immunogen	The antiserum was produced against synthesized peptide derived from the C-terminal region of human ALCAM. AA range:481-530
Isotype	IgG
Form	Liquid
Concentration	1 mg/ml
Purification	Immunogen affinity purified
Suggested Dilutions	IF 1:50-200 WB 1:500-1:2000 ELISA 1:20000

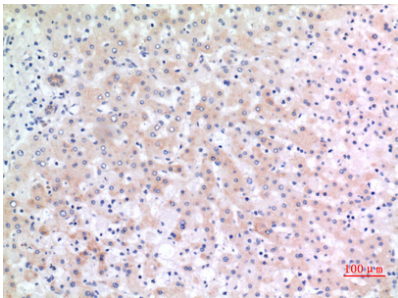
Anti-CD166 ALCAM Antibody (A01788) Images



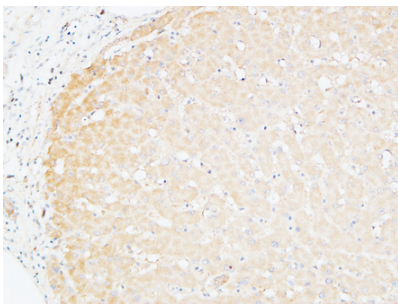
Western Blot analysis of K562 cells using CD166 Polyclonal Antibody. Secondary antibody was diluted at 1:20000



Western blot analysis of lysate from K562 cells, using ALCAM Antibody.

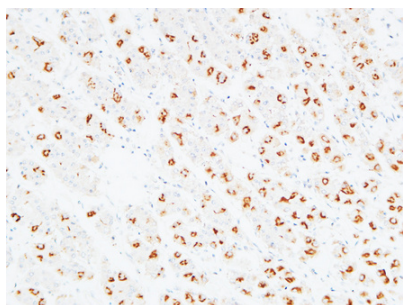


Immunohistochemical analysis of paraffin-embedded human-liver, antibody was diluted at 1:100



Immunohistochemical analysis of paraffin-embedded Human Liver. 1, Antibody was diluted at 1:200 (4° overnight). 2, High-pressure and temperature EDTA, pH8.0 was used for antigen retrieval. 3, Secondary antibody was diluted at 1:200 (room temperature, 30min).

Immunohistochemical analysis of paraffin-embedded Human stomach. 1, Antibody was diluted at 1:100 (4° overnight). 2, High-pressure and temperature EDTA, pH8.0 was used for antigen retrieval. 3, Secondary antibody was diluted at 1:200 (room temperature, 30min).



Submit a product review to Biocompare.com

Submit a review of this product to Biocompare.com to receive a \$20 Amazon.com giftcard! Your reviews help your fellow scientists make the right decisions. Thank you for your contribution.



Anti-CD166 ALCAM Antibody

For Research Use Only. Not for use in diagnostic procedures.