

## Anti-IKK epsilon IKBKE Antibody

Catalog Number: A01816

### About IKBKE

Nuclear factor kappa B (NF-kappaB) is a ubiquitous transcription factor and an essential mediator of gene expression during activation of immune and inflammatory responses. NF-kappaB mediates the expression of a great variety of genes in response to extracellular stimuli. NF-kappaB is associated with I kappa B proteins in the cell cytoplasm, which inhibit NF-kappaB activity. I kappa B is phosphorylated by I kappa B kinase (IKK) complex that contains IKKalpha, IKKbeta, and IKKgamma. A novel molecule in the IKK complex was recently identified and designated IKKepsilon/IKK-i. IKK epsilon is required for the activation of NF-kappaB by PMA and T cell receptors but not by TNFalpha and IL-1. IKKepsilon/IKK-i message is expressed in a variety of tissues and is inducible by TNFalpha, IL-1, and LPS.

### Overview

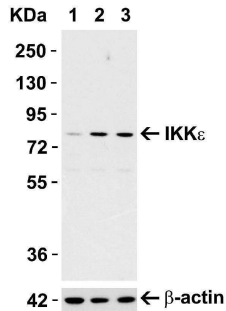
Product Name	Anti-IKK epsilon IKBKE Antibody
Reactive Species	Human, Mouse
Description	Boster Bio Anti-IKK epsilon IKBKE Antibody (Catalog # A01816). Tested in ELISA, WB, IHC-P, IF applications. This antibody reacts with Human, Mouse.
Application	ELISA, IF, IHC-P, WB
Clonality	Polyclonal
Formulation	IKK epsilon Antibody is supplied in PBS containing 0.02% sodium azide.
Storage Instructions	Antibody can be stored at 4°C up to one year. Antibodies should not be exposed to prolonged high temperatures.
Host	Rabbit
Uniprot ID	Q14164

### Technical Details

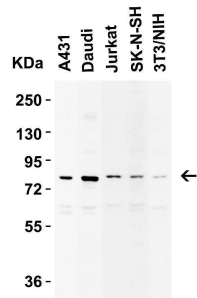
Immunogen	Anti-IKK epsilon antibody was raised against a peptide corresponding to 16 amino acids near the carboxy terminus of human IKK epsilon. The immunogen is located within the last 50 amino acids of IKK epsilon.
Predicted Reactive Species	Rat
Cross Reactivity	It has no cross response to IKKa, IKKb, or IKKy.
Isotype	IgG
Form	Liquid
Concentration	1 mg/ml

Purification	IKK epsilon Antibody is affinity chromatography purified via peptide column.
Suggested Dilutions	WB: 1-2 ug/mL; IHC: 10 ug/mL; IF: 20 ug/mL. Antibody validated: Western Blot in human and mouse samples; Immunohistochemistry in human samples; Immunofluorescence in human samples. All other applications and species not yet tested. Optimal dilutions for each application should be determined by the researcher.

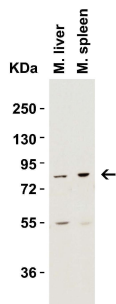
## Anti-IKK epsilon IKBKE Antibody (A01816) Images



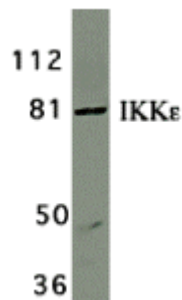
Induction Validation in Mouse Cell Line Loading: 15 ug of Raw264.7 cell lysates per lane. Antibodies: IKK epsilon A01816 (1 ug/mL), 1h incubation at RT in 5% NFDN/TBST. Secondary: Goat anti-rabbit IgG HRP conjugate at 1:10000 dilution. Cells were treated with LPS (0.3 ug/mL) for 3 hrs (lane 2) and 6 hrs (lane 3) or with control (lane 1).



Western Blot Validation in Human and Mouse Cell Lines Loading: 15 ug of lysates per lane. Antibodies: IKK epsilon A01816 (1 ug/mL), 1h incubation at RT in 5% NFDN/TBST. Secondary: Goat anti-rabbit IgG HRP conjugate at 1:10000 dilution.

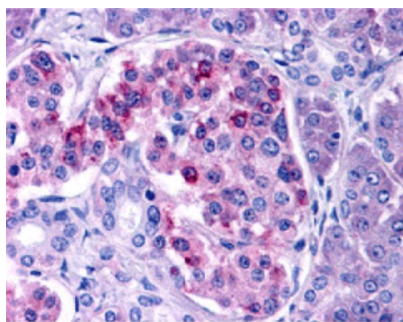


Western Blot Validation in Mouse Tissue Lysates Loading: 15 ug of lysates per lane. Antibodies: IKK epsilon A01816 (2 ug/mL), 1h incubation at RT in 5% NFDN/TBST. Secondary: Goat anti-rabbit IgG HRP conjugate at 1:10000 dilution.

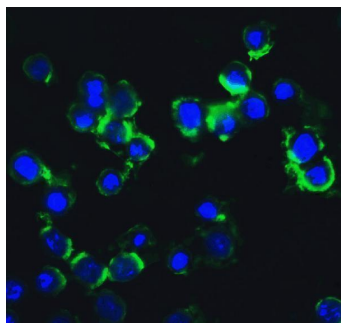


Western Blot Validation in Jurkat Cell Lysate Loading: 15 ug of lysates per lane. Antibodies: IKK epsilon A01816 (2 ug/mL), 1h incubation at RT in 5% NFDN/TBST. Secondary: Goat anti-rabbit IgG HRP conjugate at 1:10000 dilution.

Immunohistochemistry Validation of IKK epsilon in Human Pancreas Tissue Immunohistochemical analysis of paraffin-embedded human pancreas tissue using anti-IKK epsilon antibody (A01816) at 10 ug/ml. Tissue was fixed with formaldehyde and blocked with 10% serum for 1 h at RT; antigen retrieval was by heat mediation with a citrate buffer (pH6). Samples were incubated with primary antibody



overnight at 4°C. A goat anti-rabbit IgG H&L (HRP) at 1/250 was used as secondary. Counter stained with Hematoxylin.



Immunofluorescence Validation of IKK epsilon in HeLa Cells  
Immunofluorescent analysis of 4% paraformaldehyde-fixed HeLa cells labeling IKK epsilon with A01816 at 20 ug/mL, followed by goat anti-rabbit IgG secondary antibody at 1/500 dilution (green) and DAPI staining (blue).

## Submit a product review to [Biocompare.com](https://www.biocompare.com)

Submit a review of this product to [Biocompare.com](https://www.biocompare.com) to receive a \$20 Amazon.com giftcard! Your reviews help your fellow scientists make the right decisions. Thank you for your contribution.



Anti-IKK epsilon IKBKE Antibody

For Research Use Only. Not for use in diagnostic procedures.