

Anti-IKBKE Antibody

Catalog Number: A01816-1

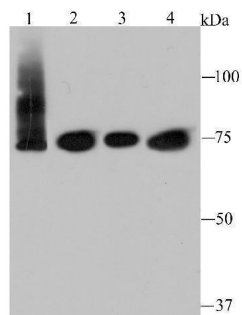
Overview

Product Name	Anti-IKBKE Antibody
Reactive Species	Human
Description	Boster Bio Anti-IKBKE Antibody catalog # A01816-1. Tested in WB,ICC,Flow Cytometry,IHC applications. This antibody reacts with Human.
Application	Flow Cytometry, IHC, ICC, WB
Clonality	Polyclonal
Formulation	Rabbit IgG, 1mg/ml in PBS with 0.02% sodium azide, 50% glycerol, pH7.2
Storage Instructions	Store at -20°C for one year. For short term storage and frequent use, store at 4°C for up to one month. Avoid repeated freeze-thaw cycles.
Host	Rabbit
Uniprot ID	Q14164

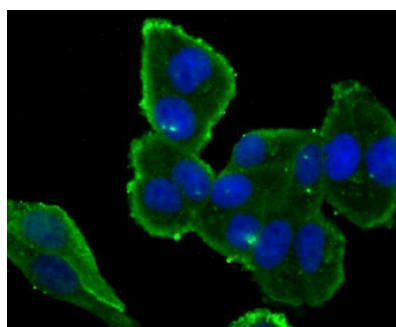
Technical Details

Immunogen	Recombinant protein
Cross Reactivity	No cross reactivity with other proteins.
Isotype	IgG
Form	Liquid
Concentration	1 mg/ml
Purification	ProA affinity purified
Suggested Dilutions	WB: 1:500-1:2,000 IHC/ICC: 1:50-1:200 FC: 1:50-1:100

Anti-IKBKE Antibody (A01816-1) Images



Western blot analysis of IKBKE on different cell lysates using anti-IKBKE antibody at 1/500 dilution. Positive control: Lane 1: Hela Lane 2: Raji Lane 3: MCF-7 Lane 4: Jurkat



ICC staining IKBKE in HeLa cells (green). The nuclear counter stain is DAPI (blue). Cells were fixed in paraformaldehyde, permeabilised with 0.25% Triton X100/PBS.

Submit a product review to [Biocompare.com](https://www.biocompare.com)

Submit a review of this product to [Biocompare.com](https://www.biocompare.com) to receive a \$20 Amazon.com giftcard! Your reviews help your fellow scientists make the right decisions. Thank you for your contribution.



Anti-IKBKE Antibody

For Research Use Only. Not for use in diagnostic procedures.