

## Anti-IKKi/IKKe/IKBKE Antibody Picoband®

Catalog Number: A01816-2

### About IKBKE

Inhibitor of nuclear factor kappa-B kinase subunit epsilon also known as I-kappa-B kinase epsilon or IKK-epsilon is an enzyme that in humans is encoded by the IKBKE gene. IKBKE is a noncanonical I-kappa-B kinase (IKK) that is essential for regulating antiviral signaling pathways. IKBKE has also been identified as a breast cancer oncogene and is amplified and overexpressed in over 30% of breast carcinomas and breast cancer cell line.

### Overview

Product Name	Anti-IKKi/IKKe/IKBKE Antibody Picoband®
Reactive Species	Human
Description	Boster Bio Anti-IKKi/IKKe/IKBKE Antibody Picoband® catalog # A01816-2. Tested in ELISA, WB applications. This antibody reacts with Human. The brand Picoband indicates this is a premium antibody that guarantees superior quality, high affinity, and strong signals with minimal background in Western blot applications. Only our best-performing antibodies are designated as Picoband, ensuring unmatched performance.
Application	ELISA, WB
Clonality	Polyclonal
Formulation	Each vial contains 4mg Trehalose, 0.9mg NaCl and 0.2mg Na <sub>2</sub> HPO <sub>4</sub> .
Storage Instructions	Store at -20°C for one year from date of receipt. After reconstitution, at 4°C for one month. It can also be aliquotted and stored frozen at -20°C for six months. Avoid repeated freeze-thaw cycles.
Host	Rabbit
Uniprot ID	Q14164

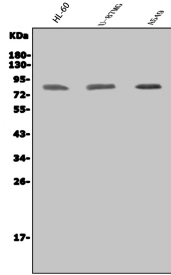
### Technical Details

Immunogen	E.coli-derived human IKKi/IKKe/IKBKE recombinant protein (Position: Q318-V716).
Recommended Detection Systems	Boster recommends Enhanced Chemiluminescent Kit with anti-Rabbit IgG (EK1002) for Western blot.
Cross Reactivity	No cross-reactivity with other proteins.
Isotype	Rabbit IgG
Form	Lyophilized
Concentration	Adding 0.2 ml of distilled water will yield a concentration of 500 ug/ml.
Purification	Immunogen affinity purified.

Suggested Dilutions

Western blot, 0.25-0.5ug/ml, Human  
ELISA, 0.1-0.5ug/ml, -

## Anti-IKKi/IKKe/IKBKE Antibody Picoband® (A01816-2) Images



Western blot analysis of IKKi/IKKe/IKBKE using anti-IKKi/IKKe/IKBKE antibody (A01816-2). Electrophoresis was performed on a 5-20% SDS-PAGE gel at 70V (Stacking gel) / 90V (Resolving gel) for 2-3 hours. The sample well of each lane was loaded with 50ug of sample under reducing conditions. Lane 1: human HL-60 whole cell lysates, Lane 2: human U-87MG whole cell lysates, Lane 3: human A549 whole cell lysates. After Electrophoresis, proteins were transferred to a Nitrocellulose membrane at 150mA for 50-90 minutes. Blocked the membrane with 5% Non-fat Milk/TBS for 1.5 hour at RT. The membrane was incubated with rabbit anti-IKKi/IKKe/IKBKE antigen affinity purified polyclonal antibody (Catalog # A01816-2) at 0.5 ug/mL overnight at 4°C, then washed with TBS-0.1%Tween 3 times with 5 minutes each and probed with a goat anti-rabbit IgG-HRP secondary antibody at a dilution of 1:5000 for 1.5 hour at RT. The signal is developed using an Enhanced Chemiluminescent detection (ECL) kit (Catalog # EK1002) with Tanon 5200 system. A specific band was detected for IKKi/IKKe/IKBKE at approximately 80KD. The expected band size for IKKi/IKKe/IKBKE is at 80KD.

### Submit a product review to [Biocompare.com](https://www.biocompare.com)

Submit a review of this product to [Biocompare.com](https://www.biocompare.com) to receive a \$20 Amazon.com giftcard! Your reviews help your fellow scientists make the right decisions. Thank you for your contribution.



Anti-IKKi/IKKe/IKBKE Antibody

For Research Use Only. Not for use in diagnostic procedures.