

Anti-Endothelin A Receptor/ET-A/EDNRA Antibody Picoband®

Catalog Number: A01828-4

About EDNRA

This gene encodes the receptor for endothelin-1, a peptide that plays a role in potent and long-lasting vasoconstriction. This receptor associates with guanine-nucleotide-binding (G) proteins, and this coupling activates a phosphatidylinositol-calcium second messenger system. Polymorphisms in this gene have been linked to migraine headache resistance. Alternative splicing results in multiple transcript variants.

Overview

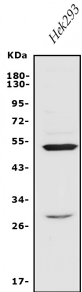
Product Name	Anti-Endothelin A Receptor/ET-A/EDNRA Antibody Picoband®
Reactive Species	Human
Description	Boster Bio Anti-Endothelin A Receptor/ET-A/EDNRA Antibody Picoband® catalog # A01828-4. Tested in ELISA, Flow Cytometry, IHC, WB applications. This antibody reacts with Human. The brand Picoband indicates this is a premium antibody that guarantees superior quality, high affinity, and strong signals with minimal background in Western blot applications. Only our best-performing antibodies are designated as Picoband, ensuring unmatched performance.
Application	ELISA, Flow Cytometry, IHC, WB
Clonality	Polyclonal
Formulation	Each vial contains 4mg Trehalose, 0.9mg NaCl, 0.2mg Na2HPO4, 0.01mg NaN3.
Storage Instructions	Store at -20°C for one year from date of receipt. After reconstitution, at 4°C for one month. It can also be aliquotted and stored frozen at -20°C for six months. Avoid repeated freeze-thaw cycles.
Host	Rabbit
Uniprot ID	P25101

Technical Details

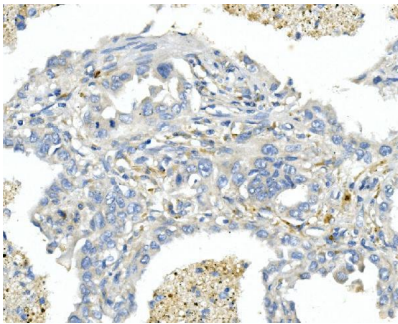
Immunogen	E.coli-derived human Endothelin A Receptor/ET-A/EDNRA recombinant protein (Position: N32-Q381).
Recommended Detection Systems	Boster recommends Enhanced Chemiluminescent Kit with anti-Rabbit IgG (EK1002) for Western blot, and HRP Conjugated anti-Rabbit IgG Super Vision Assay Kit (SV0002-1) for IHC(P).
Cross Reactivity	No cross-reactivity with other proteins.
Isotype	Rabbit IgG
Form	Lyophilized
Concentration	Adding 0.2 ml of distilled water will yield a concentration of 500 ug/ml.

Purification	Immunogen affinity purified.
Suggested Dilutions	Western blot, 0.25-0.5ug/ml, Human Immunohistochemistry (Paraffin-embedded Section), 0.5-1ug/ml, Human Flow Cytometry (Fixed), 1-3ug/1x10 ⁶ cells, Human ELISA, 0.1-0.5ug/ml, -

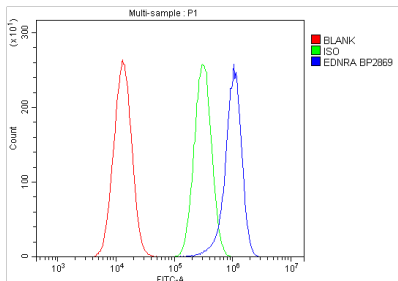
Anti-Endothelin A Receptor/ET-A/EDNRA Antibody Picoband® (A01828-4) Images



Western blot analysis of Endothelin A Receptor/ET-A/ EDNRA using anti-Endothelin A Receptor/ET-A/ EDNRA antibody (A01828-4). Electrophoresis was performed on a 5-20% SDS-PAGE gel at 70V (Stacking gel) / 90V (Resolving gel) for 2-3 hours. The sample well of each lane was loaded with 50ug of sample under reducing conditions. Lane 1: human HEK293 whole cell lysates. After Electrophoresis, proteins were transferred to a Nitrocellulose membrane at 150mA for 50-90 minutes. Blocked the membrane with 5% Non-fat Milk/TBS for 1.5 hour at RT. The membrane was incubated with rabbit anti-Endothelin A Receptor/ET-A/ EDNRA antigen affinity purified polyclonal antibody (Catalog # A01828-4) at 0.5 ug/mL overnight at 4°C, then washed with TBS-0.1%Tween 3 times with 5 minutes each and probed with a goat anti-rabbit IgG-HRP secondary antibody at a dilution of 1:10000 for 1.5 hour at RT. The signal is developed using an Enhanced Chemiluminescent detection (ECL) kit (Catalog # EK1002) with Tanon 5200 system. A specific band was detected for Endothelin A Receptor/ET-A/ EDNRA at approximately 50KD. The expected band size for Endothelin A Receptor/ET-A/ EDNRA is at 50KD.



IHC analysis of Endothelin A Receptor/ET-A/ EDNRA using anti-Endothelin A Receptor/ET-A/ EDNRA antibody (A01828-4). Endothelin A Receptor/ET-A/ EDNRA was detected in paraffin-embedded section of human lung cancer tissue. Heat mediated antigen retrieval was performed in EDTA buffer (pH8.0, epitope retrieval solution). The tissue section was blocked with 10% goat serum. The tissue section was then incubated with 1ug/ml rabbit anti-Endothelin A Receptor/ET-A/ EDNRA Antibody (A01828-4) overnight at 4°C. Biotinylated goat anti-rabbit IgG was used as secondary antibody and incubated for 30 minutes at 37°C. The tissue section was developed using Streptavidin-Biotin-Complex (SABC) (Catalog # SA1022) with DAB as the chromogen.



Flow Cytometry analysis of A549 cells using anti-Endothelin A Receptor/ET-A/ EDNRA antibody (A01828-4). Overlay histogram showing A549 cells stained with A01828-4 (Blue line). The cells were fixed with 4% paraformaldehyde and blocked with 10% normal goat serum. And then incubated with rabbit anti-Endothelin A Receptor/ET-A/ EDNRA Antibody (A01828-4, 1ug/1x10⁶ cells) for 30 min at 20°C. DyLight®488 conjugated goat anti-rabbit IgG (BA1127, 5-10ug/1x10⁶ cells) was used as secondary antibody for 30 minutes at 20°C. Isotype control antibody (Green line) was rabbit IgG (1ug/1x10⁶) used under the same conditions. Unlabelled sample without incubation with primary antibody and secondary antibody (Red line) was used as a blank control.

1. PubMed ID: 20167215, Peng Hj, Dai Dz, Ji H, Dai Y. Eur J Pharmacol. 2010 May 25;634(1-3):101-6. Doi: 10.1016/J.Ejphar.2010.02.001. Epub 2010 Feb 16. The Separate Roles Of Endothelin Receptors Participate In Remodeling Of Matrix Metalloproteinase And Connexin 43 Of Car...

Visit bosterbio.com/anti-endothelin-a-receptor-et-a-ednra-picoband-trade-antibody-a01828-4-boster.html to see all 1 publications.

Submit a product review to Biocompare.com

Submit a review of this product to Biocompare.com to receive a \$20 Amazon.com giftcard! Your reviews help your fellow scientists make the right decisions. Thank you for your contribution.



Anti-Endothelin A Receptor/ET-A/EDNRA Antibody

For Research Use Only. Not for use in diagnostic procedures.